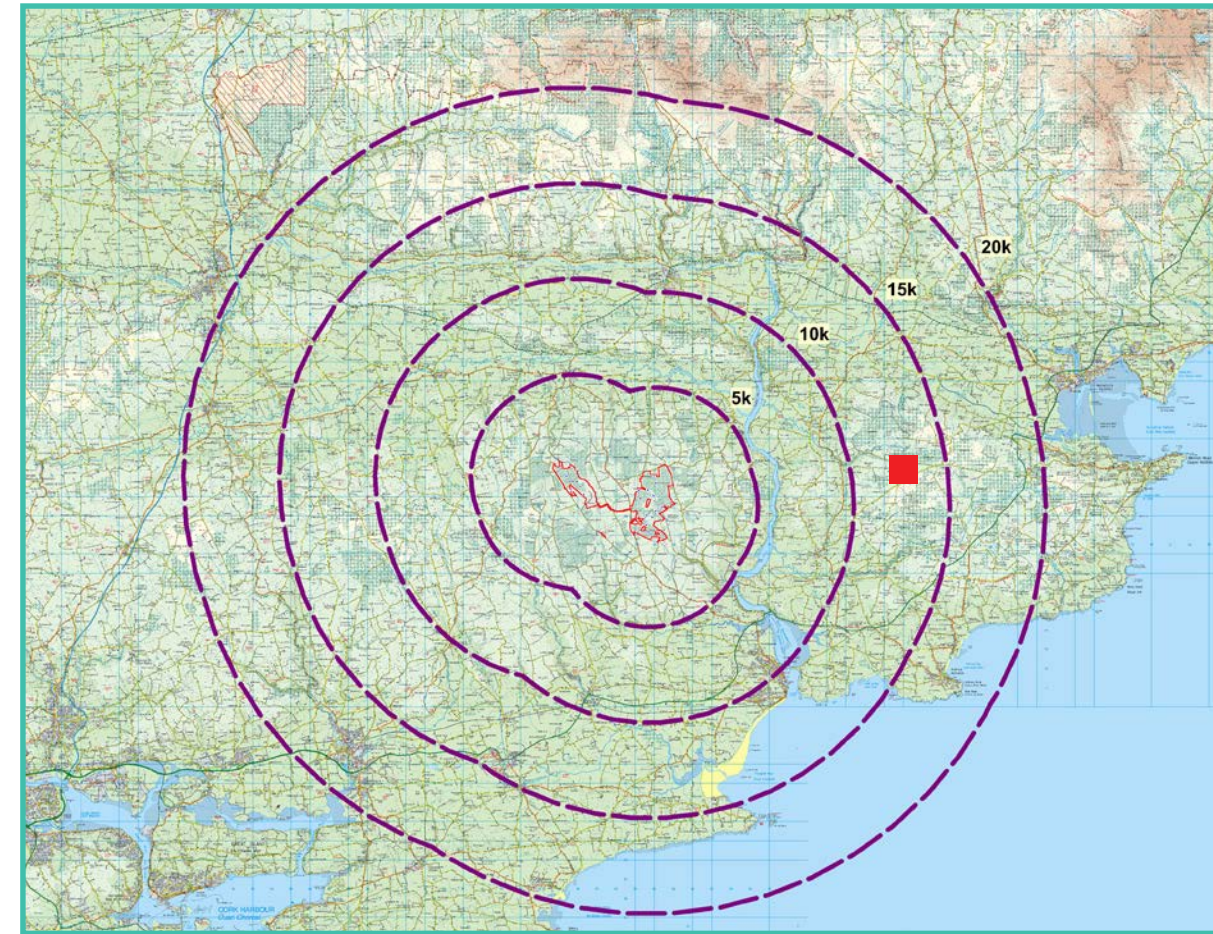


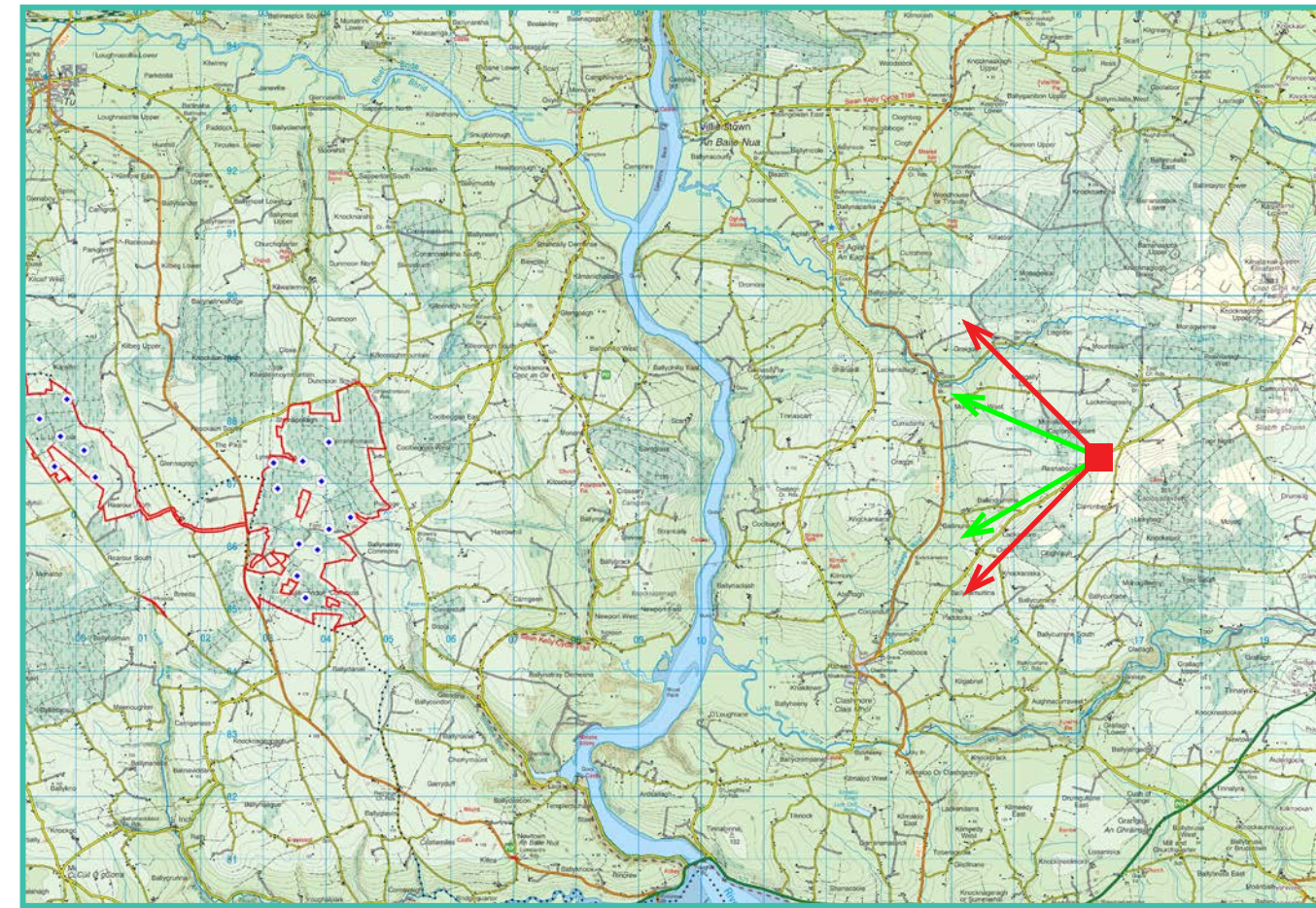
### Photomontage 4

**View Point:** View from County Waterford Scenic Route No. 6 on the L2024 local road in the townland of Reanaboola, approximately 11.88 km east of the of the nearest turbine

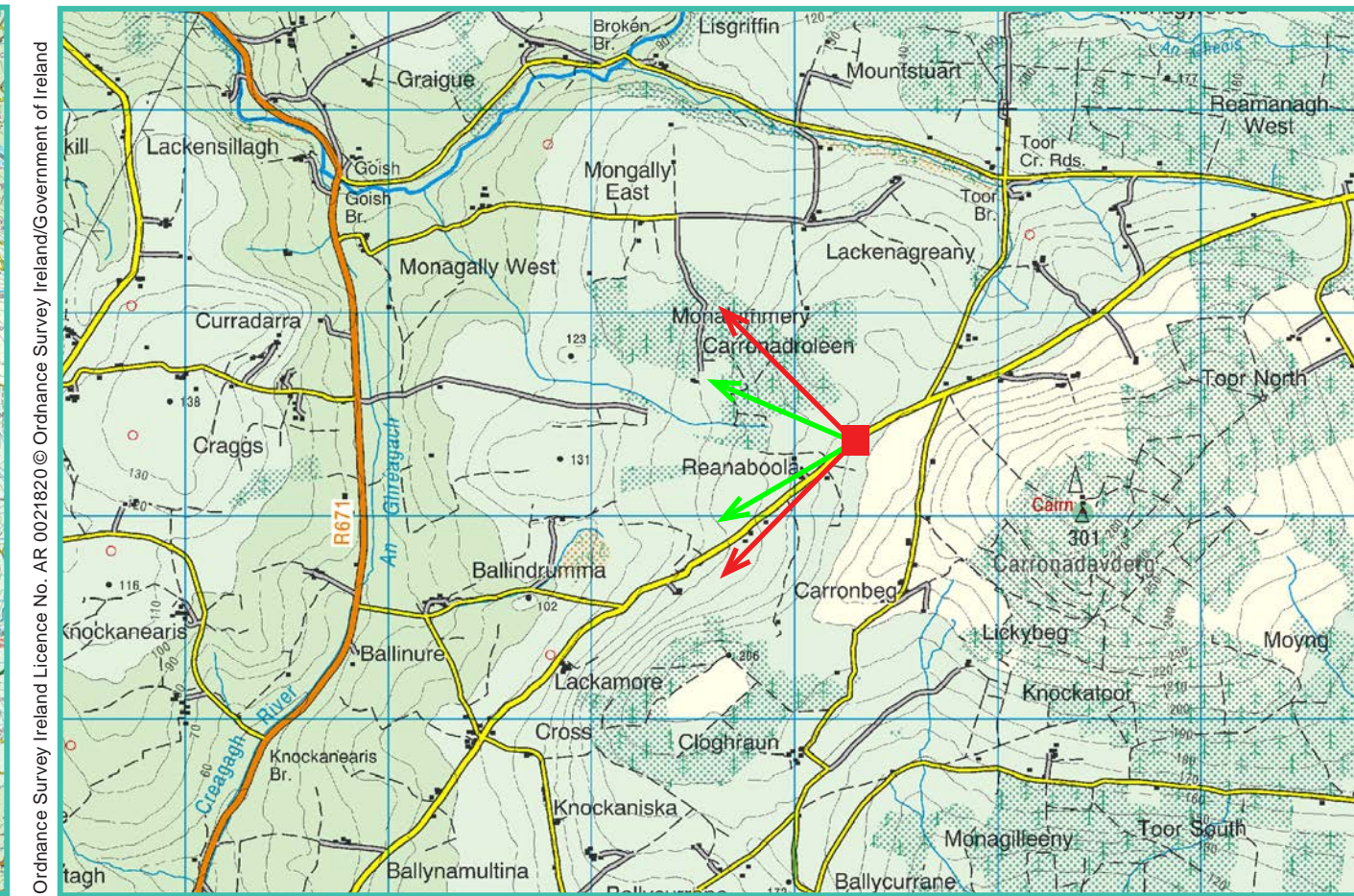
View point grid reference	216,270(E); 87,362(N)
Date of image taken	12.03.2019
Time of image taken	12:19pm
View point elevation	190m
Angle of Views	90° / 53.4°
View Direction (Image Centre)	270°
Horizontal extent of proposed turbines	13°
Distance to nearest proposed turbine	11.88km (T6)
Number of proposed turbines visible	17/17
Turbine Hub Height	93.5m
Turbine Tip Height	150m
Turbine Rotor Diameter	113m
Camera	Canon EOS 600D with 1.5x sensor
Lens	35mm prime. Equivalent zoom range 52.5mm
Tripod	Manfrotto 190X extended to approx 1.65m.
Map Licence	©Copyright of Ordnance Survey Ireland. All Rights Reserved; License No: AR 0021819



View point relative to 20km radius.



View point relative to wind farm site (core boundary outlined in red).



Detail of view point location.

#### Map Legend

- Area shown in 90-degree view
- Area shown in 53.5-degree view
- View point
- Site Boundary

#### Wireframe Legend

- Proposed Wind Farm in Blue
- Permitted Wind Farms in Pink
- Existing Wind Farms in Grey

#### Prepared by

MKO  
 Planning & Environmental Consultants  
 Tuam Road, Galway.  
 Tel: (091) 73 56 11  
 E-mail: info@mkoireland.ie  
 Website: www.mkoireland.ie

#### 90 - Degree View Extent

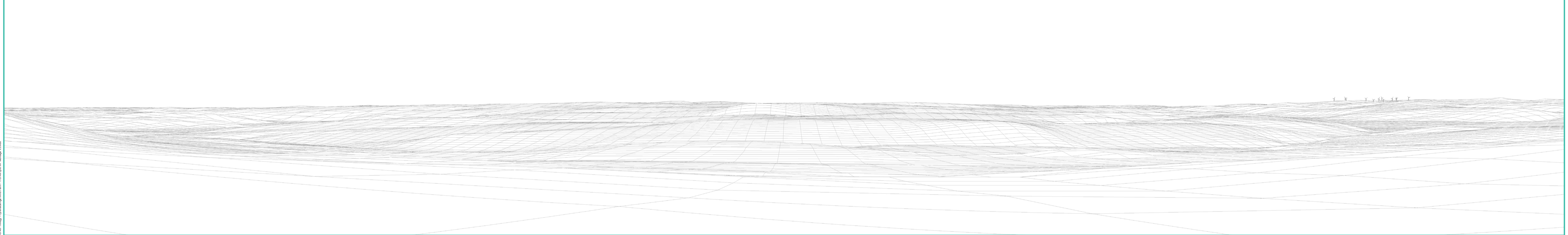
Key image at 120 degrees



#### 53.5-Degree View Extent

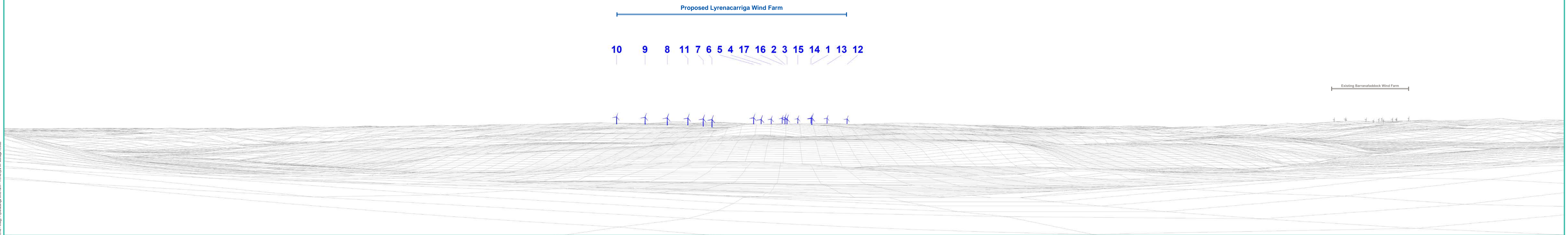


Matching wireframe





Matching wireframe



12/21/2016 - 12/21/2016 - Lyrenacarriga Wind Farm - 12/21/2016 WF Montage 03.indd

Proposed Photomontage at 53.5 degrees with Cumulative



Matching wireframe

Proposed Lyrenacarriga Wind Farm



10 9 8 11 7 6 5 4 17 16 2 3 15 14 1 13 12

