

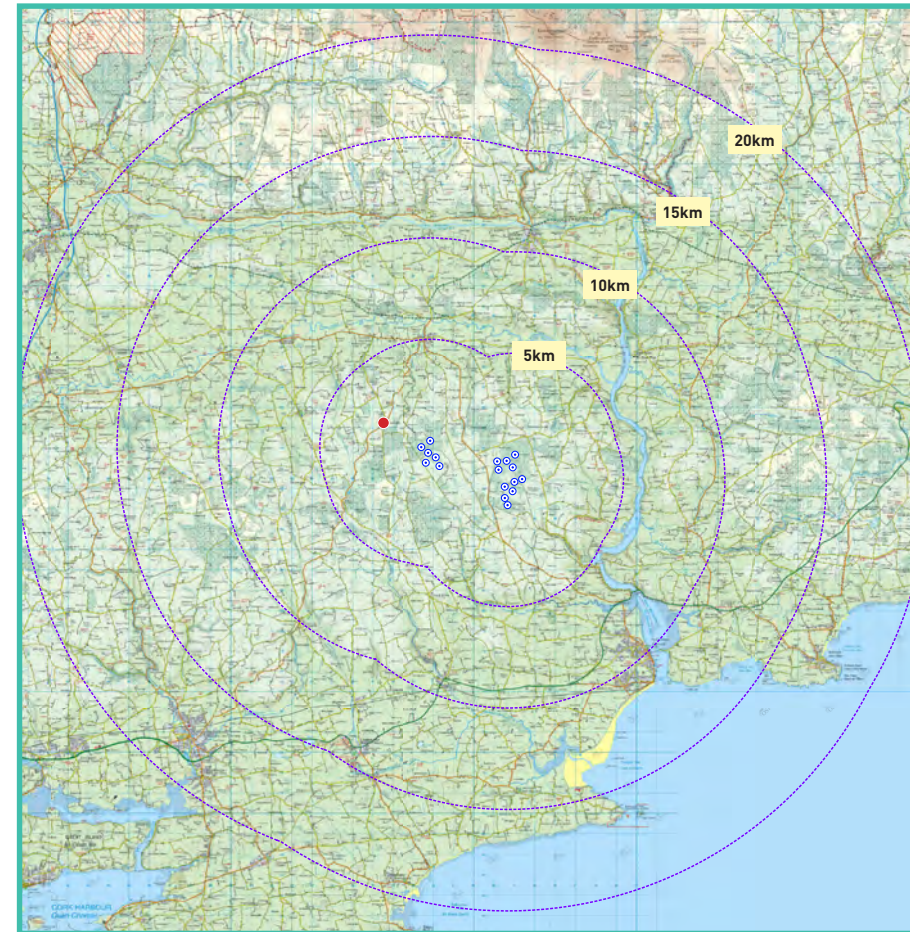
View Point 28

Glengoura Upper

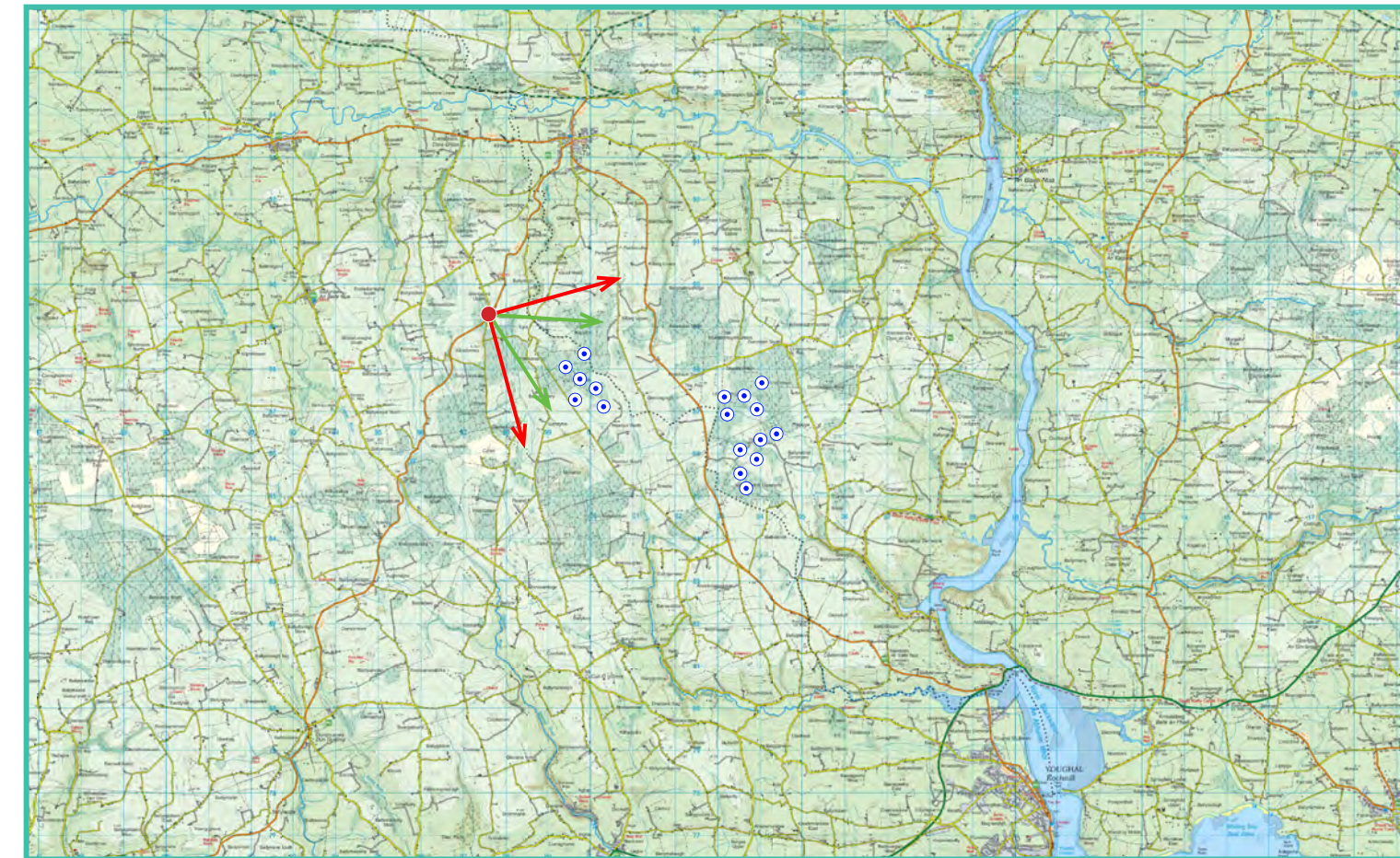
Photomontage 28

View Point: View from the R627 regional road in the townland of Glengoura Upper. This viewpoint is located approximately 2.2 km north-west of the nearest turbine (T13).

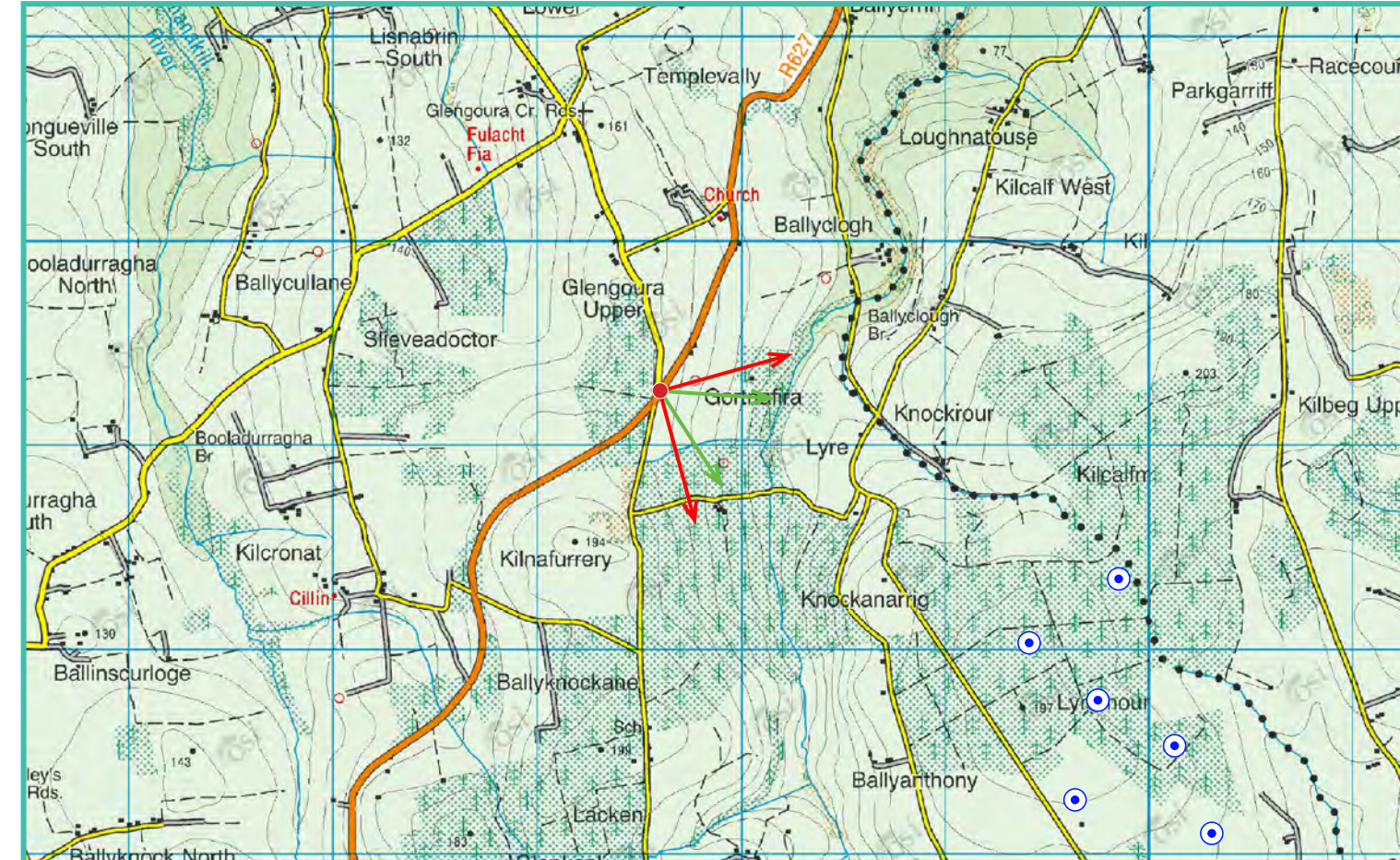
View point grid reference	E 597,535 N 589,306
Date of image taken	17.06.2022
Time of image taken	14:11
View point elevation	158m
Angle of Views	90° / 53.5°
View Direction (Image Centre)	120°
Horizontal extent of proposed turbines	32°
Distance to nearest proposed turbine	2.2km (T13)
Number of proposed turbines visible	5/17
Turbine Hub Height	93.5m
Turbine Tip Height	150m
Turbine Rotor Diameter	113m
Camera	Canon 5D Mark III / Full Frame Sensor.
Lens	50mm Lens
Tripod	Manfrotto 190X extended to approx 1.5m.
Map Licence	© Ordnance Survey Ireland. All rights reserved. Licence number CYAL50267517



View point relative to 20km radius.



View point relative to wind farm site.



Detail of view point location.

Map Legend

- Area shown in 90° view
- Area shown in 53.5° view
- View Point

Wireframe Legend

- Proposed Wind Farm
- Existing Wind Farms
- Proposed Met Mast

Prepared by

MKO
Planning & Environmental Consultants
Tuam Road, Galway.

Tel: (091) 73 56 11
E-mail: info@mkofireland.ie
Website: www.mkofireland.ie



90° View Extent

Key Image at 120°

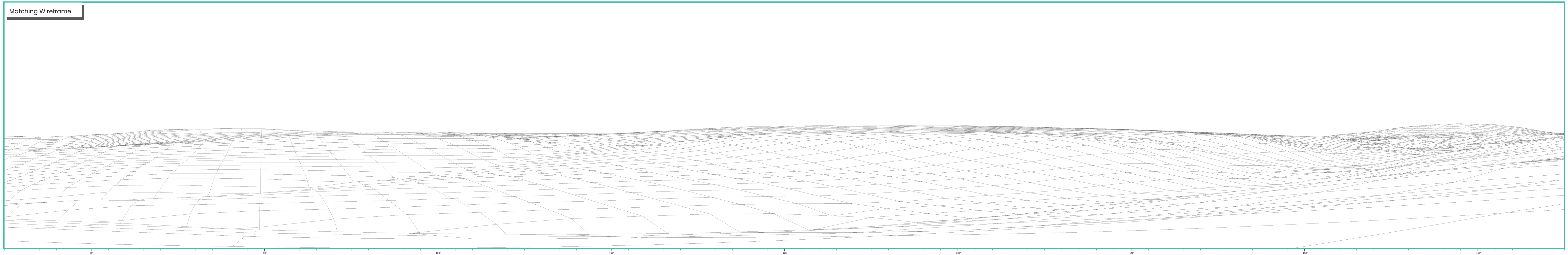


53.5° View Extent

Existing View at 90°



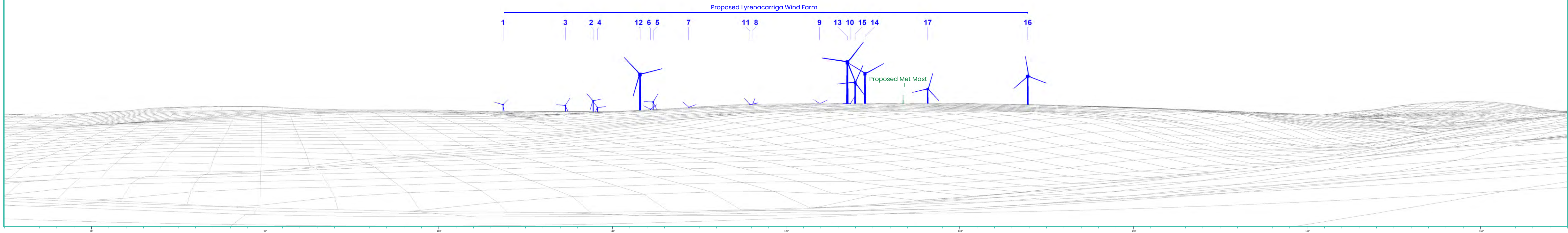
Matching Wireframe



Proposed Photomontage with Cumulative at 90°



Matching Wireframe



Proposed Photomontage with Cumulative at 53.5°



Proposed Lyrenacarriga Wind Farm

- 1
- 3
- 2 4
- 12 6 5
- 7
- 11 8
- 9
- 13 10 15 14
- 17
- 16

