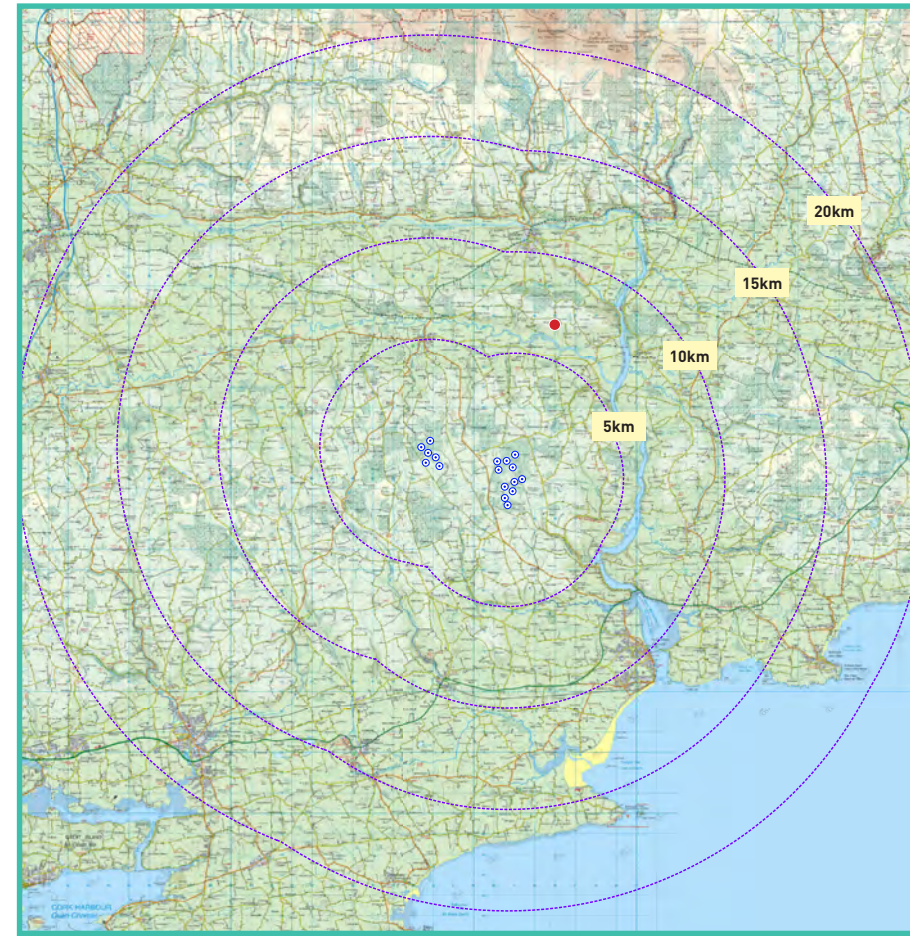


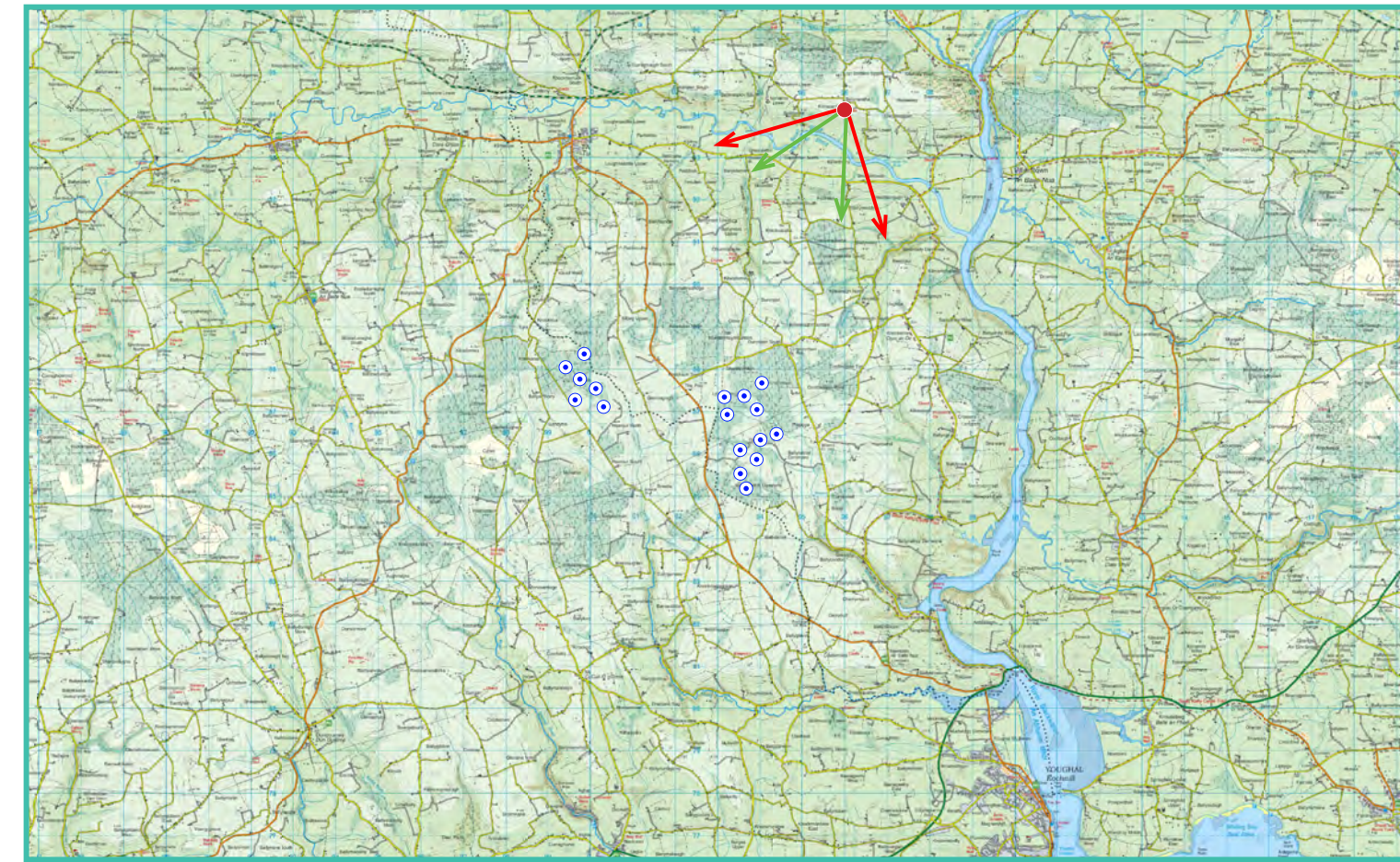
### Photomontage 24

**View Point:** View from Ballynaraha Castle, a cultural heritage site in the townland of Kilnacarriga. This viewpoint is located approximately 6.7 km north of the nearest turbine (T1).

View point grid reference	E 605,959 N 594,095
Date of image taken	17.06.2022
Time of image taken	09:31
View point elevation	99m
Angle of Views	90° / 53.5°
View Direction (Image Centre)	209°
Horizontal extent of proposed turbines	37°
Distance to nearest proposed turbine	6.7km (T1)
Number of proposed turbines visible	2/17
Turbine Hub Height	93.5m
Turbine Tip Height	150m
Turbine Rotor Diameter	113m
Camera	Canon 5D Mark III / Full Frame Sensor.
Lens	50mm Lens
Tripod	Manfrotto 190X extended to approx 1.5m.
Map Licence	© Ordnance Survey Ireland. All rights reserved. Licence number CYAL50267517



View point relative to 20km radius.



View point relative to wind farm site.



Detail of view point location.

#### Map Legend

- Area shown in 90° view
- Area shown in 53.5° view
- View Point

#### Wireframe Legend

- Proposed Wind Farm
- Existing Wind Farms
- Proposed Met Mast

#### Prepared by

MKO  
 Planning & Environmental Consultants  
 Tuam Road, Galway.  
 Tel: (091) 73 56 11  
 E-mail: info@mkofireland.ie  
 Website: www.mkofireland.ie



90° View Extent

Key Image at 120°

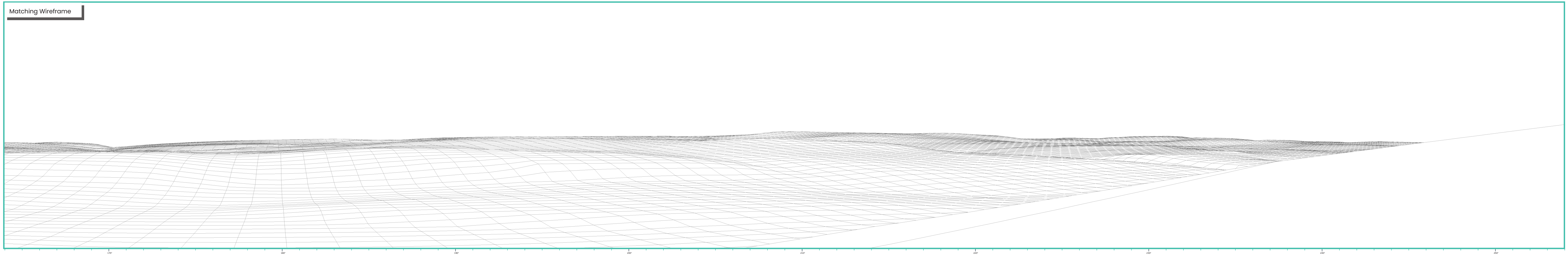


53.5° View Extent

Existing View at 90°



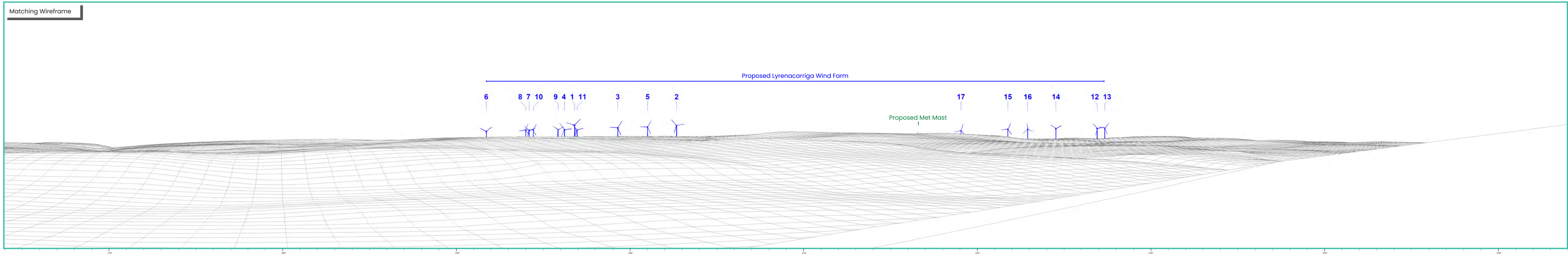
Matching Wireframe



Proposed Photomontage with Cumulative at 90°



Matching Wireframe



Proposed Photomontage with Cumulative at 53.5°



