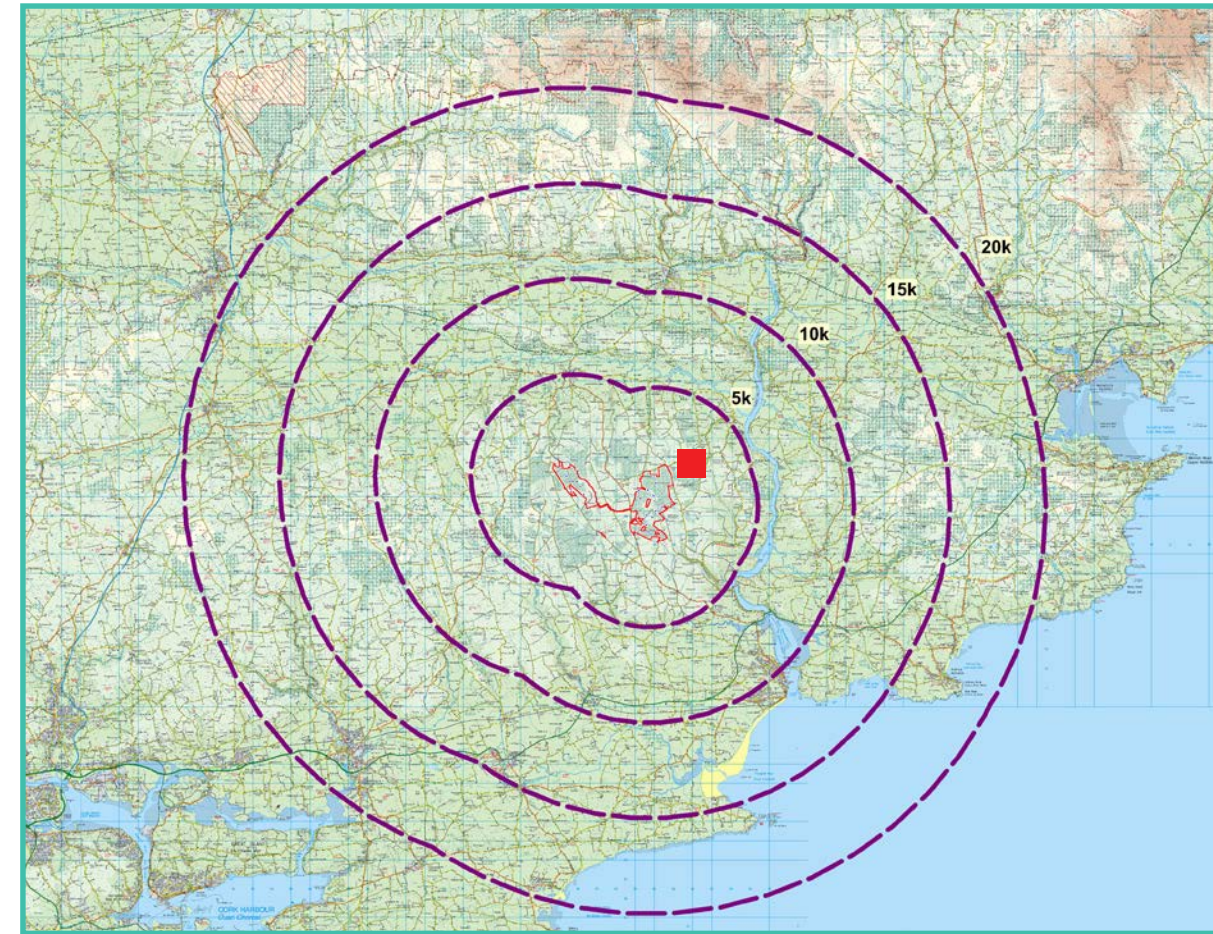


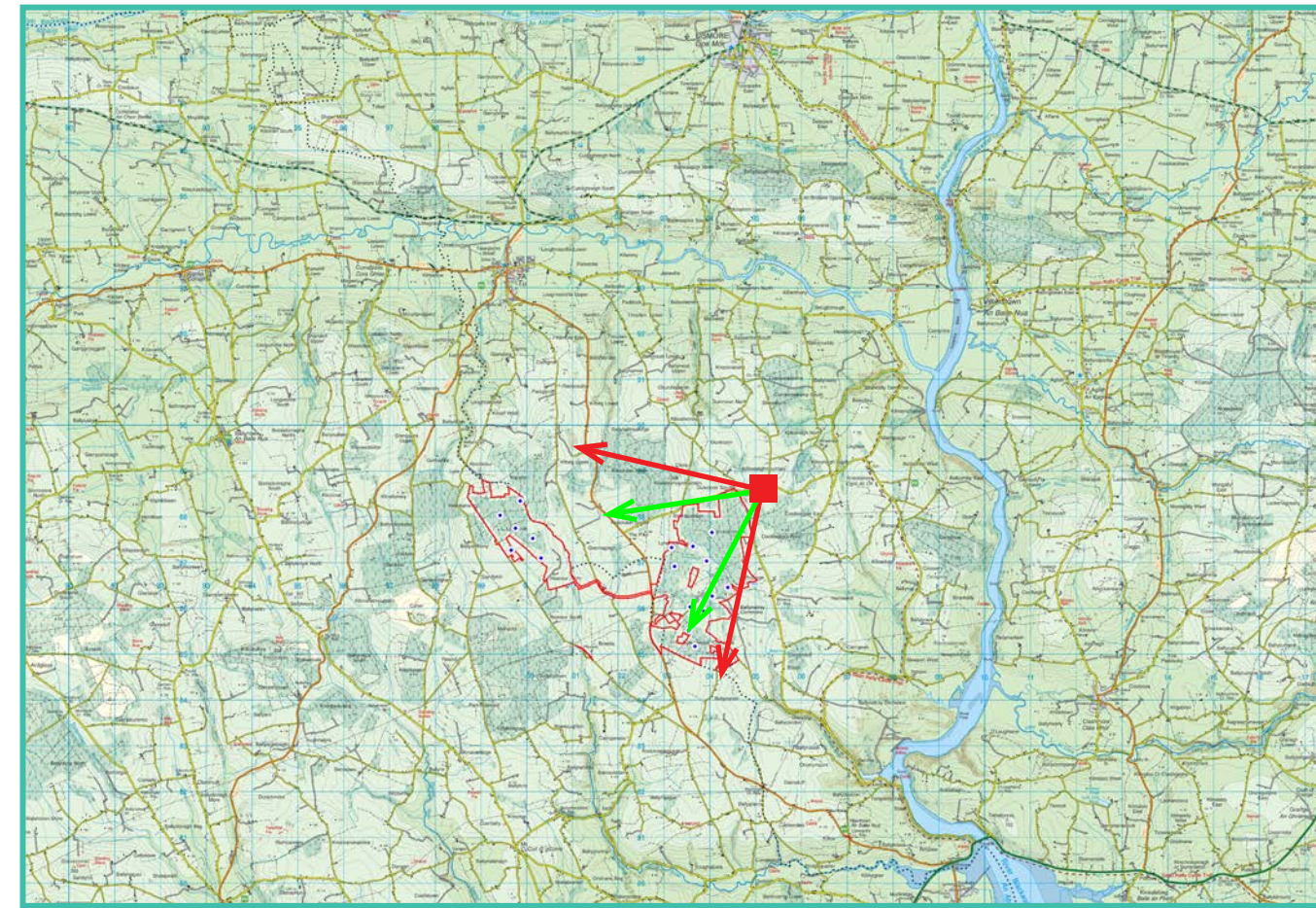
Photomontage 2

View Point: View from the L2003 local road in the townland of Killeenagh mountain, approximately 1.53 km north-east of the of the nearest turbine

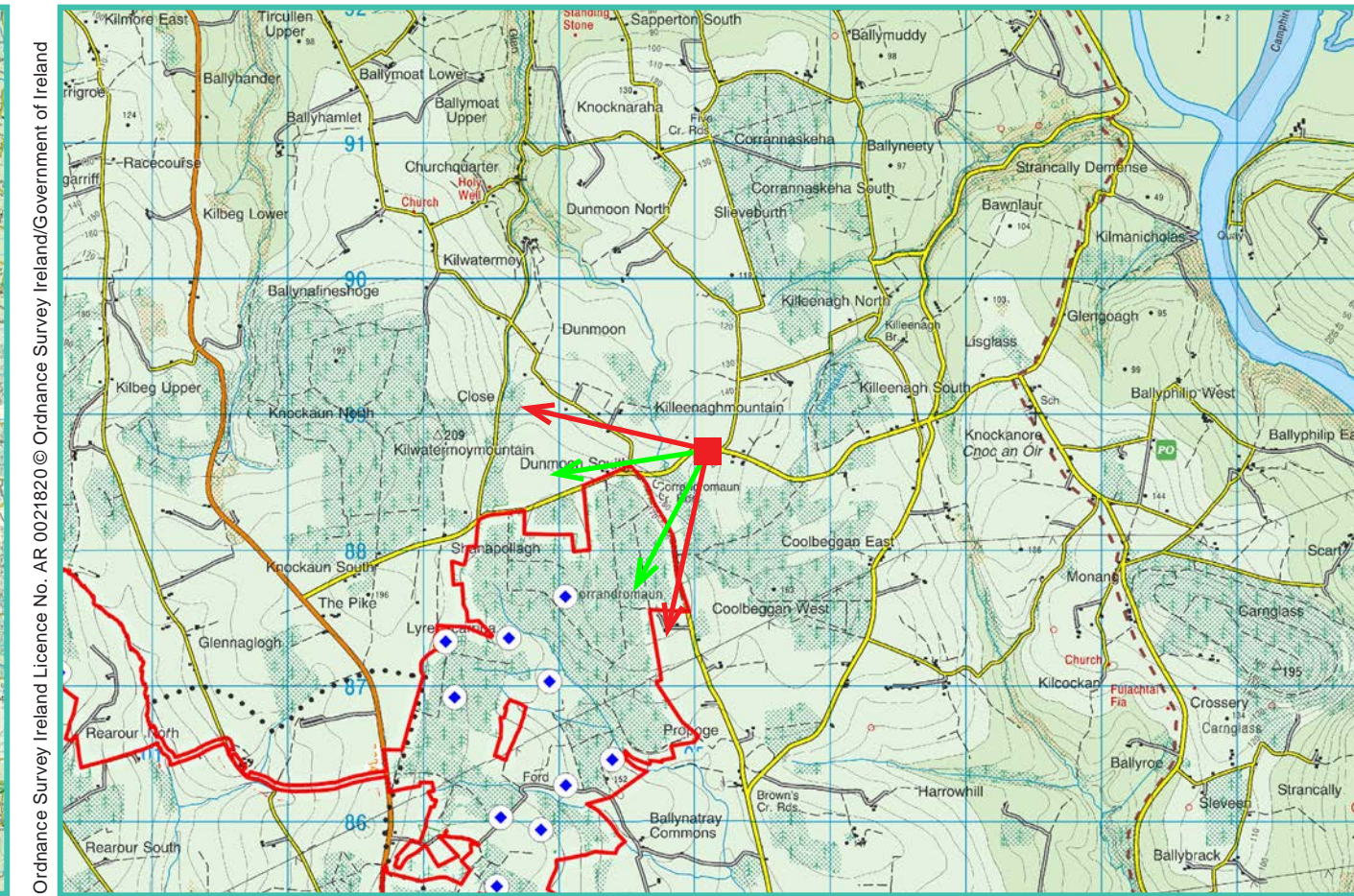
View point grid reference	205,111(E); 88,752(N)
Date of image taken	12.09.2018
Time of image taken	10:47am
View point elevation	150m
Angle of Views	90° / 53.4°
View Direction (Image Centre)	237°
Horizontal extent of proposed turbines	70°
Distance to nearest proposed turbine	1.53km (T1)
Number of proposed turbines visible	11/17
Turbine Hub Height	93.5m
Turbine Tip Height	150m
Turbine Rotor Diameter	113m
Camera	Canon EOS 600D with 1.5x sensor
Lens	35mm prime. Equivalent zoom range 52.5mm
Tripod	Manfrotto 190X extended to approx 1.65m.
Map Licence	©Copyright of Ordnance Survey Ireland. All Rights Reserved; License No: AR 0021819



View point relative to 20km radius.



View point relative to wind farm site (core boundary outlined in red).



Detail of view point location.

Map Legend

- Area shown in 90-degree view
- Area shown in 53.5-degree view
- View point
- Site Boundary

Wireframe Legend

- Proposed Wind Farm in Blue
- Permitted Wind Farms in Pink
- Existing Wind Farms in Grey

Prepared by

MKO
 Planning & Environmental Consultants
 Tuam Road, Galway.
 Tel: (091) 73 56 11
 E-mail: info@mkoireland.ie
 Website: www.mkoireland.ie

90 - Degree View Extent



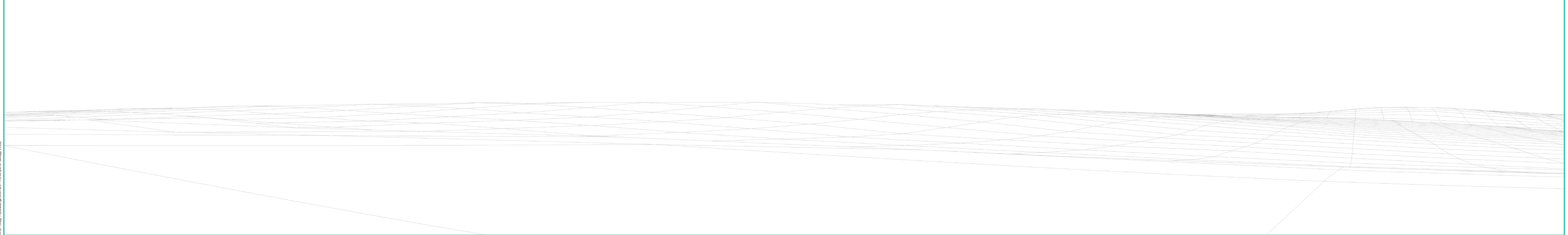
Key image at 120 degrees

53.5-Degree View Extent

170749 - 0000 - Killeenagh Wind Farm - 170749 (in WP Manager V3.indd)



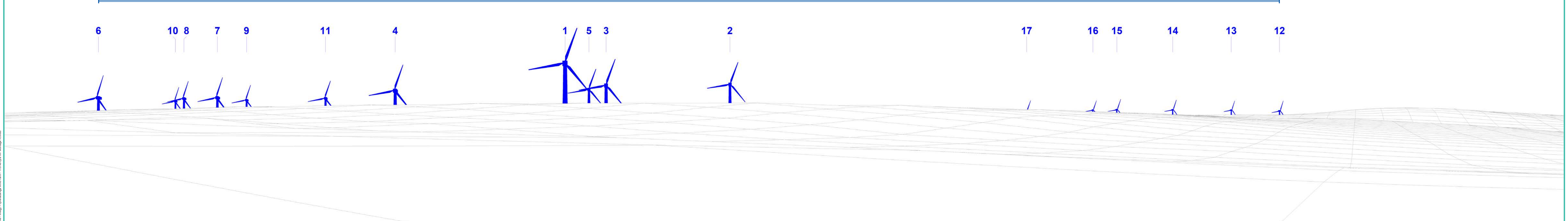
Matching wireframe





Matching wireframe

Proposed Lyrenacarriga Wind Farm



Proposed Photomontage at 53.5 degrees with Cumulative



Proposed Lyrenacarriga Wind Farm

