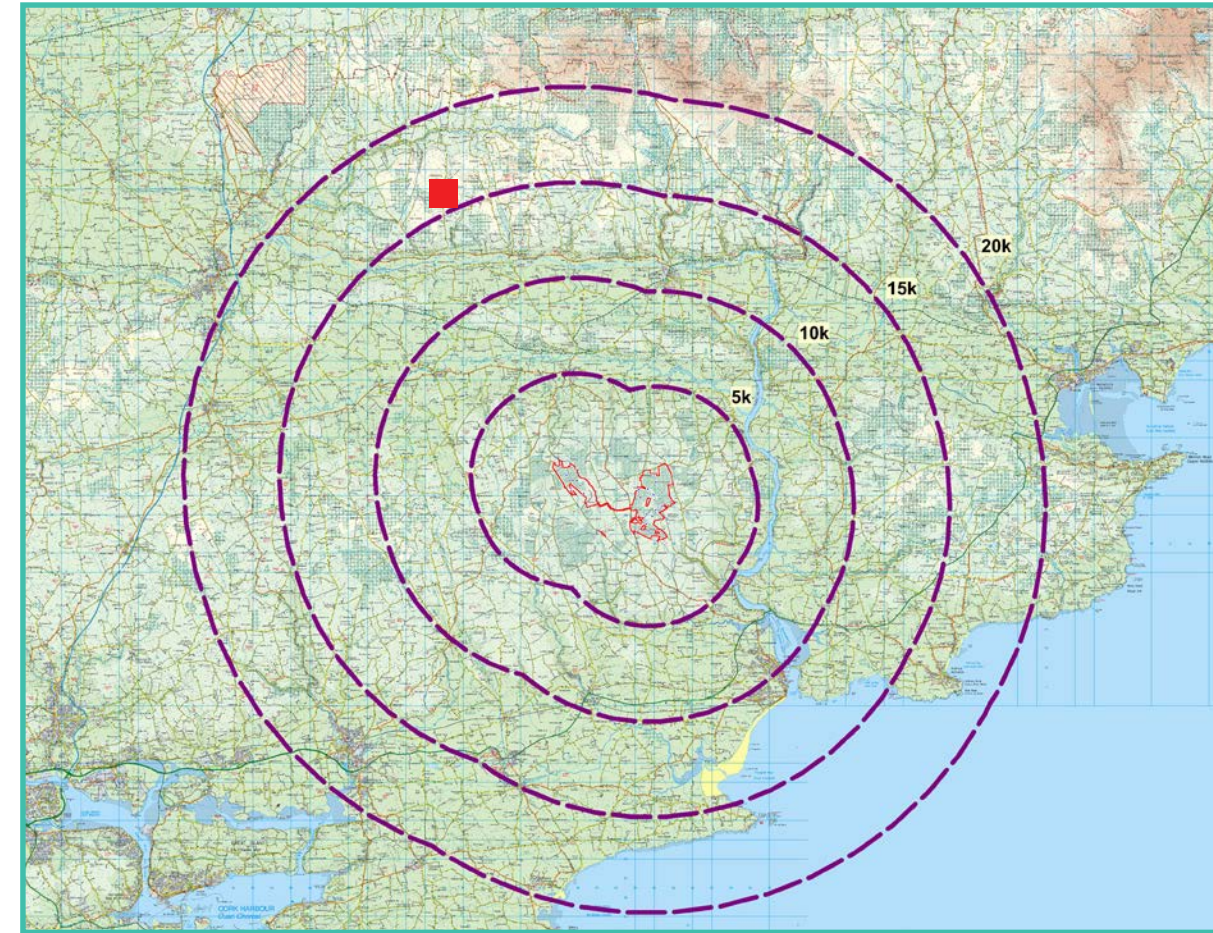


View Point 15
Labbanacallee

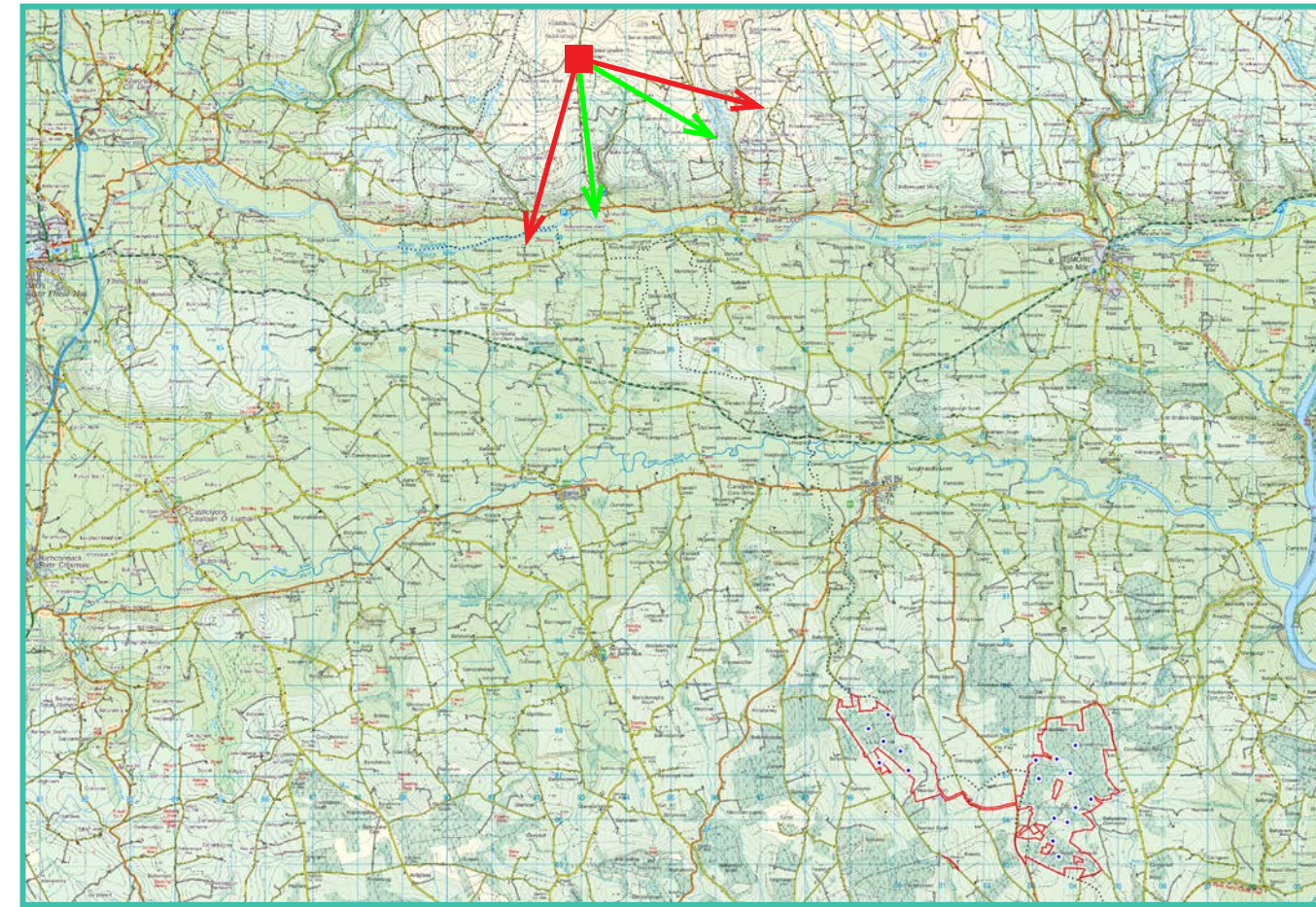
Photomontage 15

View Point: View from County Waterford Scenic Route No. 3 on an unnamed road in the townland of Labbanacallee, approximately 16.11 km north of the of the nearest turbine

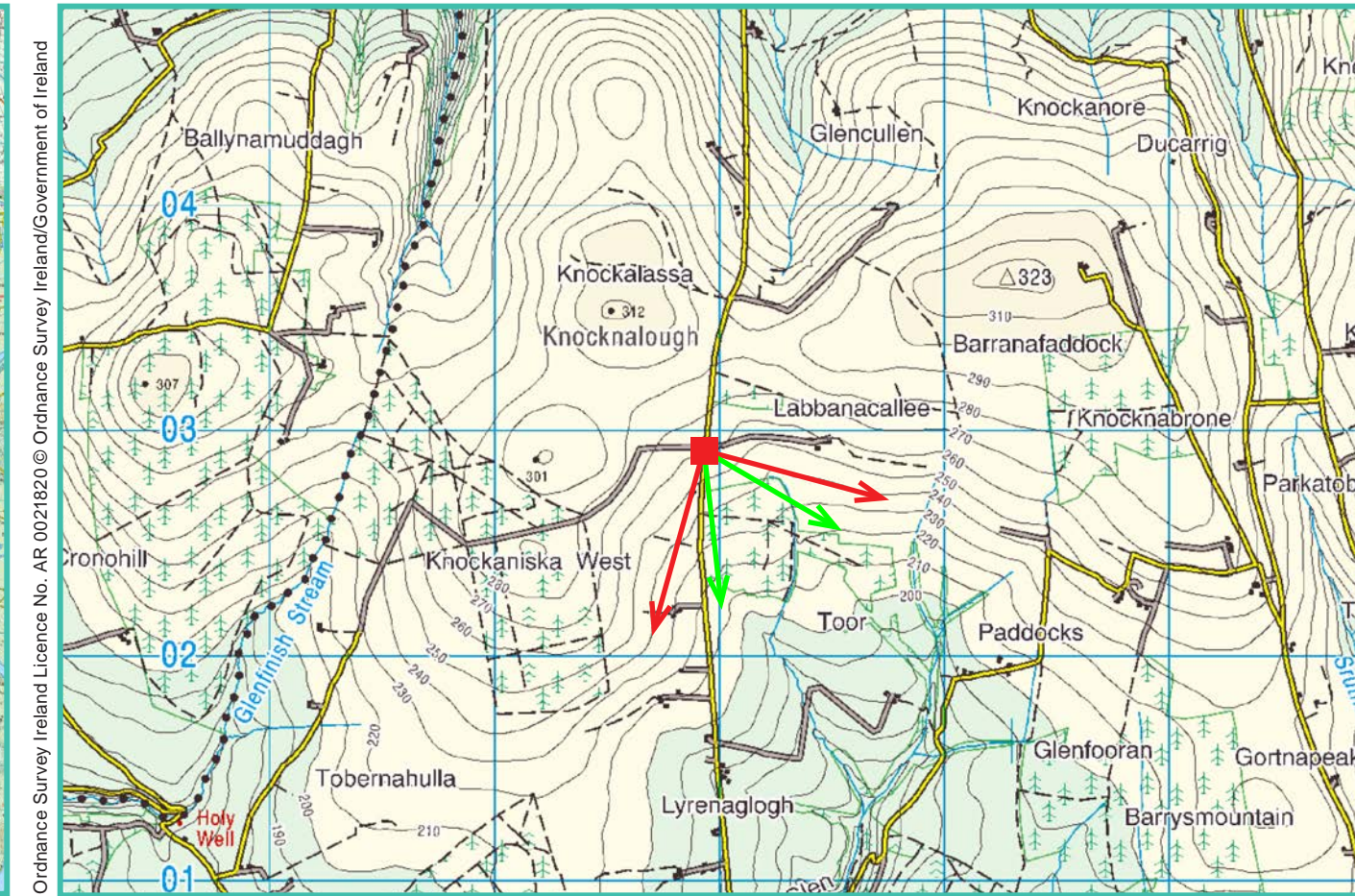
View point grid reference	192,938(E); 102,927(N)
Date of image taken	15.09.2019
Time of image taken	4:42pm
View point elevation	260m
Angle of Views	90° / 53.4°
View Direction (Image Centre)	150°
Horizontal extent of proposed turbines	12°
Distance to nearest proposed turbine	16.11km (T12)
Number of proposed turbines visible	17/17
Turbine Hub Height	93.5m
Turbine Tip Height	150m
Turbine Rotor Diameter	113m
Camera	Canon EOS 600D with 1.5x sensor
Lens	35mm prime. Equivalent zoom range 52.5mm
Tripod	Manfrotto 190X extended to approx 1.65m.
Map Licence	©Copyright of Ordnance Survey Ireland. All Rights Reserved; License No: AR 0021819



View point relative to 20km radius.



View point relative to wind farm site (core boundary outlined in red).



Detail of view point location.

Map Legend

- Area shown in 90-degree view
- Area shown in 53.5-degree view
- View point
- Site Boundary

Wireframe Legend

- Proposed Wind Farm in Blue
- Permitted Wind Farms in Pink
- Existing Wind Farms in Grey

Prepared by
MKO
Planning & Environmental Consultants
Tuam Road, Galway.
Tel: (091) 73 56 11
E-mail: info@mkoireland.ie
Website: www.mkoireland.ie

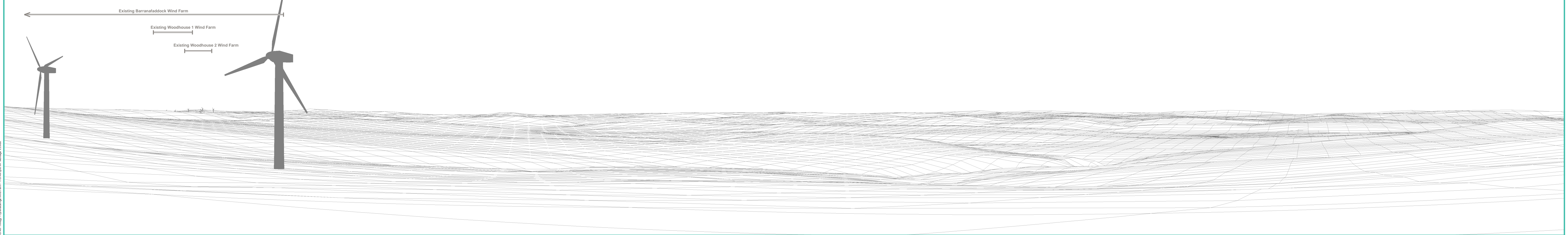
90 - Degree View Extent

53.5-Degree View Extent





Matching wireframe



Cumulative photomontage 90 Degrees



Matching wireframe



Proposed Photomontage at 53.5 degrees with Cumulative



Matching wireframe

Proposed Lyrenacarriga Wind Farm

