

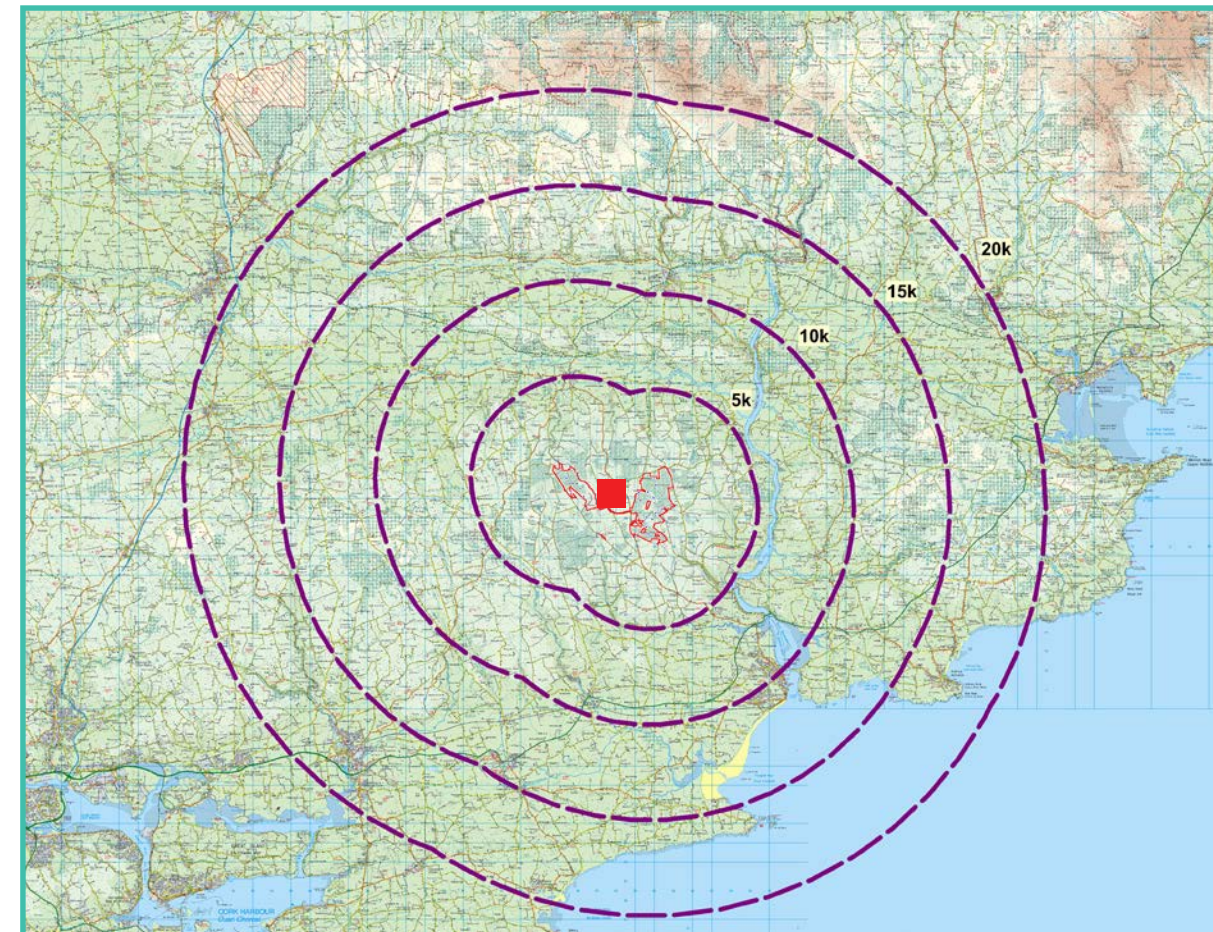
# View Point 10B

# Breeda

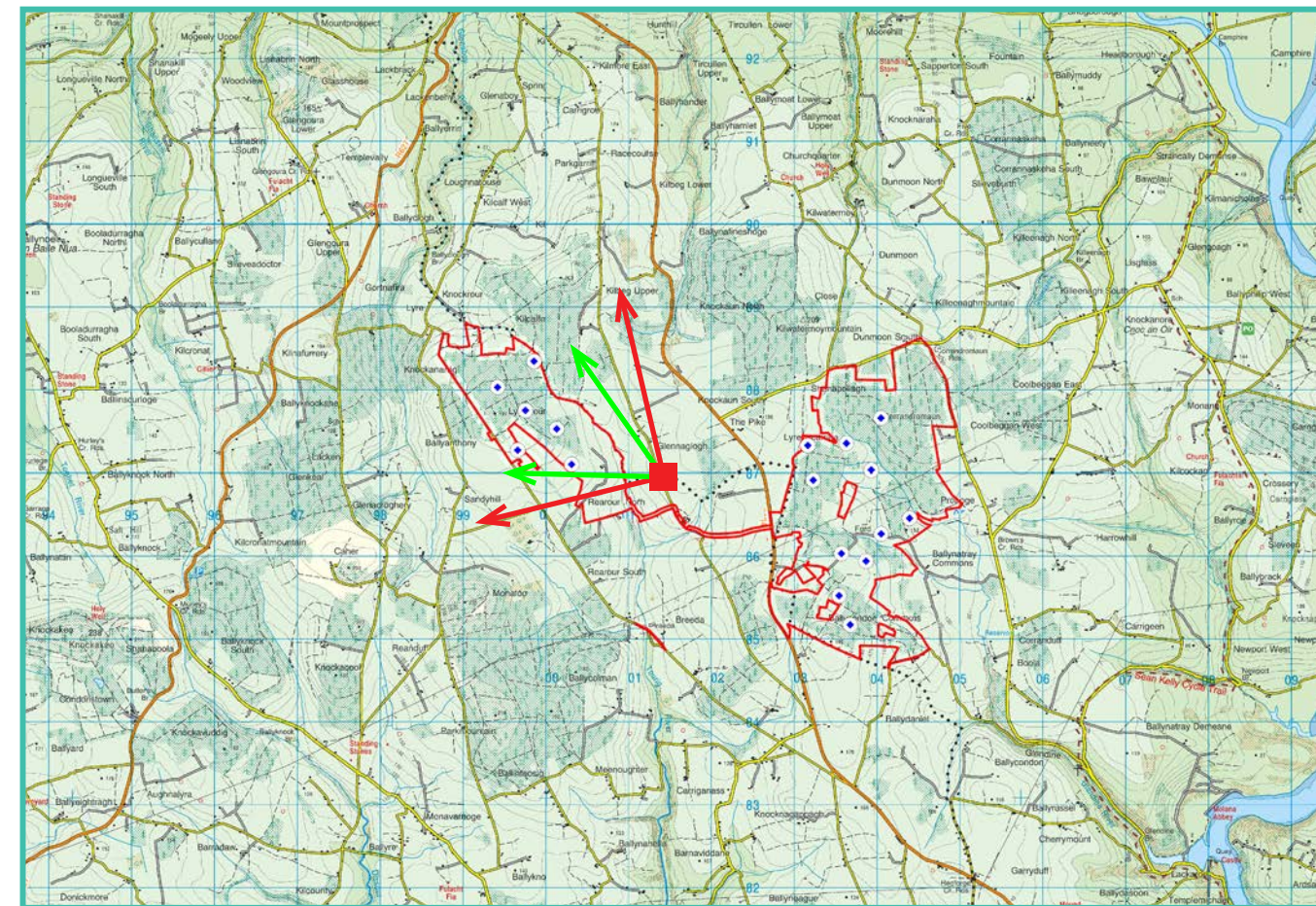
## Photomontage 10B

**View Point:** View from L-7809 local road in the townland of Breeda, approximately 1.12 km south-east of the of the nearest turbine

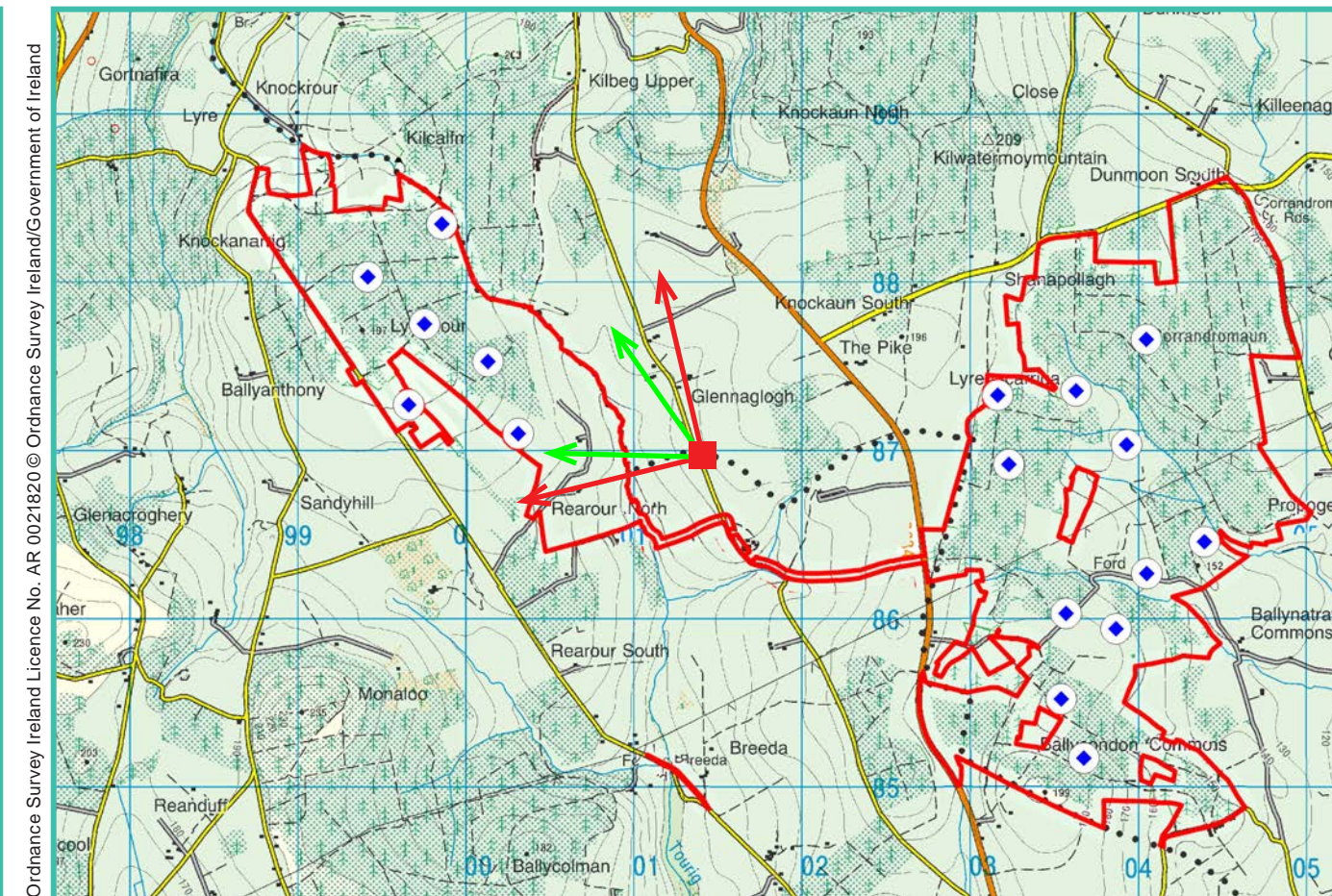
View point grid reference	201,411(E); 86,904(N)
Date of image taken	12.09.2018
Time of image taken	12:15pm
View point elevation	155m
Angle of Views	90° / 53.4°
View Direction (Image Centre)	301°
Horizontal extent of proposed turbines	40°
Distance to nearest proposed turbine	1.12km (T17)
Number of proposed turbines visible	7/17
Turbine Hub Height	93.5m
Turbine Tip Height	150m
Turbine Rotor Diameter	113m
Camera	Canon EOS 600D with 1.5x sensor
Lens	35mm prime. Equivalent zoom range 52.5mm
Tripod	Manfrotto 190X extended to approx 1.65m.
Map Licence	©Copyright of Ordnance Survey Ireland. All Rights Reserved; License No: AR 0021819



View point relative to 20km radius.



View point relative to wind farm site (core boundary outlined in red).



Detail of view point location.

**Map Legend**

- Area shown in 90-degree view
- Area shown in 53.5-degree view
- View point
- Site Boundary

**Wireframe Legend**

- Proposed Wind Farm in Blue
- Permitted Wind Farms in Pink
- Existing Wind Farms in Grey

**Prepared by**  
 MKO  
 Planning & Environmental Consultants  
 Tuam Road, Galway.  
 Tel: (091) 73 56 11  
 E-mail: info@mkoireland.ie  
 Website: www.mkoireland.ie

90 - Degree View Extent



Key image at 120 degrees

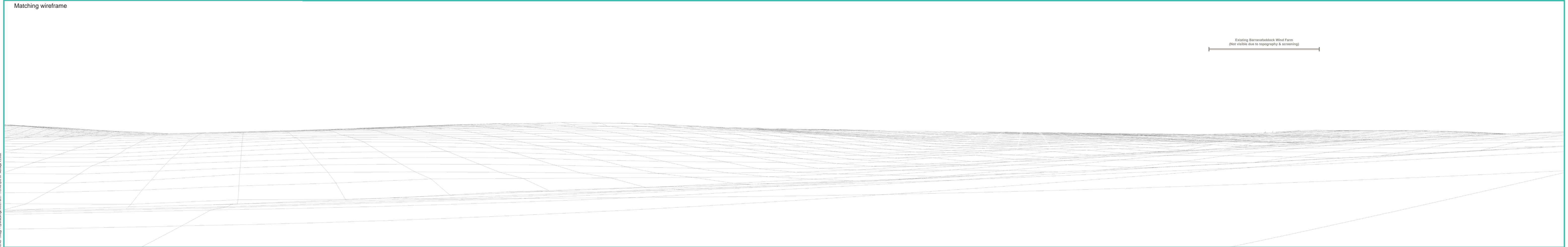
53.5-Degree View Extent



Baseline at 90 degrees



Matching wireframe

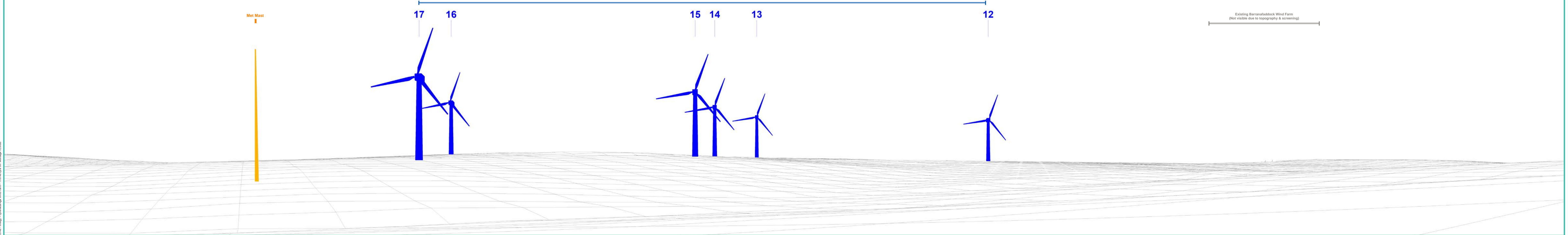


Existing Barranafaddock Wind Farm  
 (Not visible due to topography & screening)





Matching wireframe





Proposed Photomontage at 53.5 degrees with Cumulative



170749 - Energy - Lismacally Wind Farm - 170749 Lay WP Montage 01.indd



Matching wireframe

Proposed Lyrenacarriga Wind Farm

17

16

15

14

13

12

