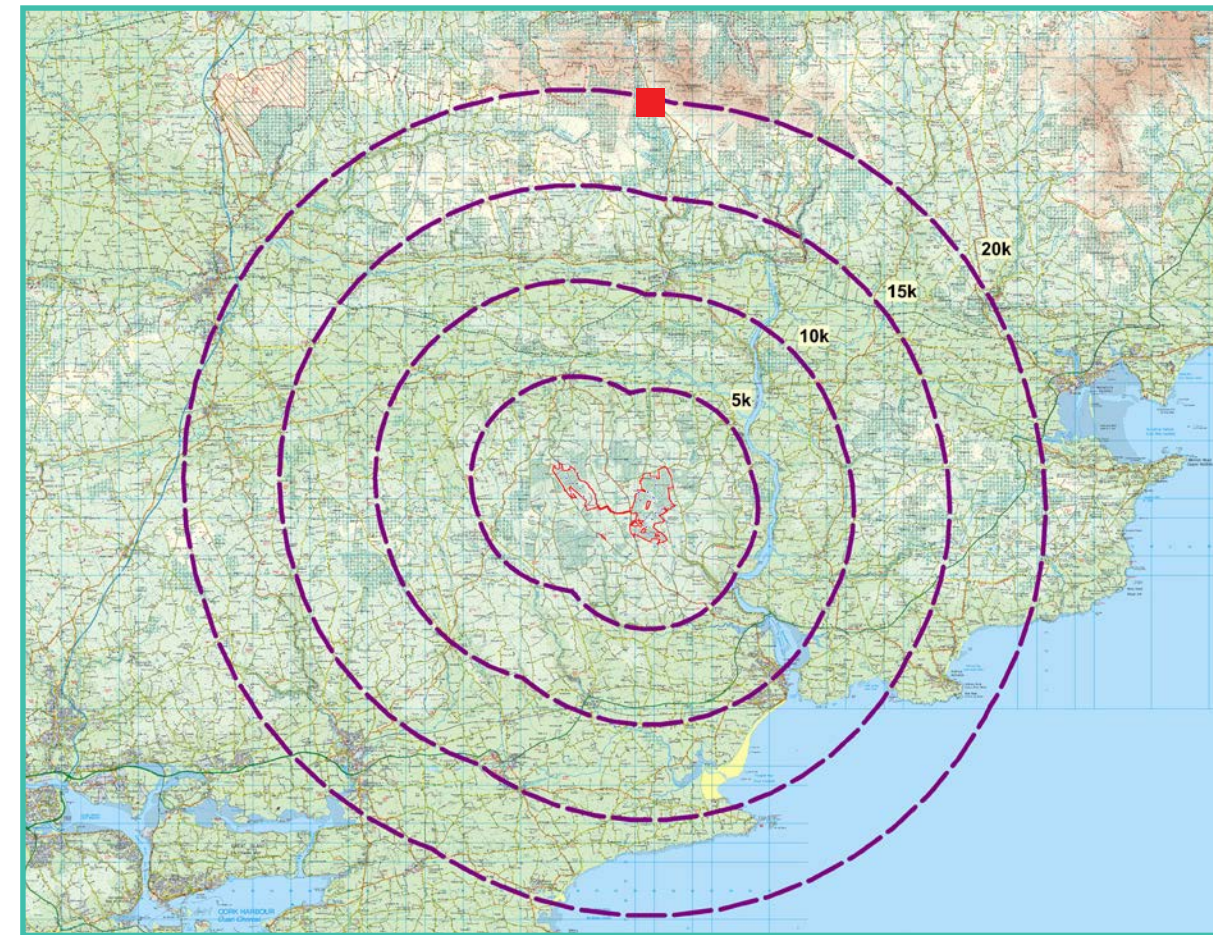


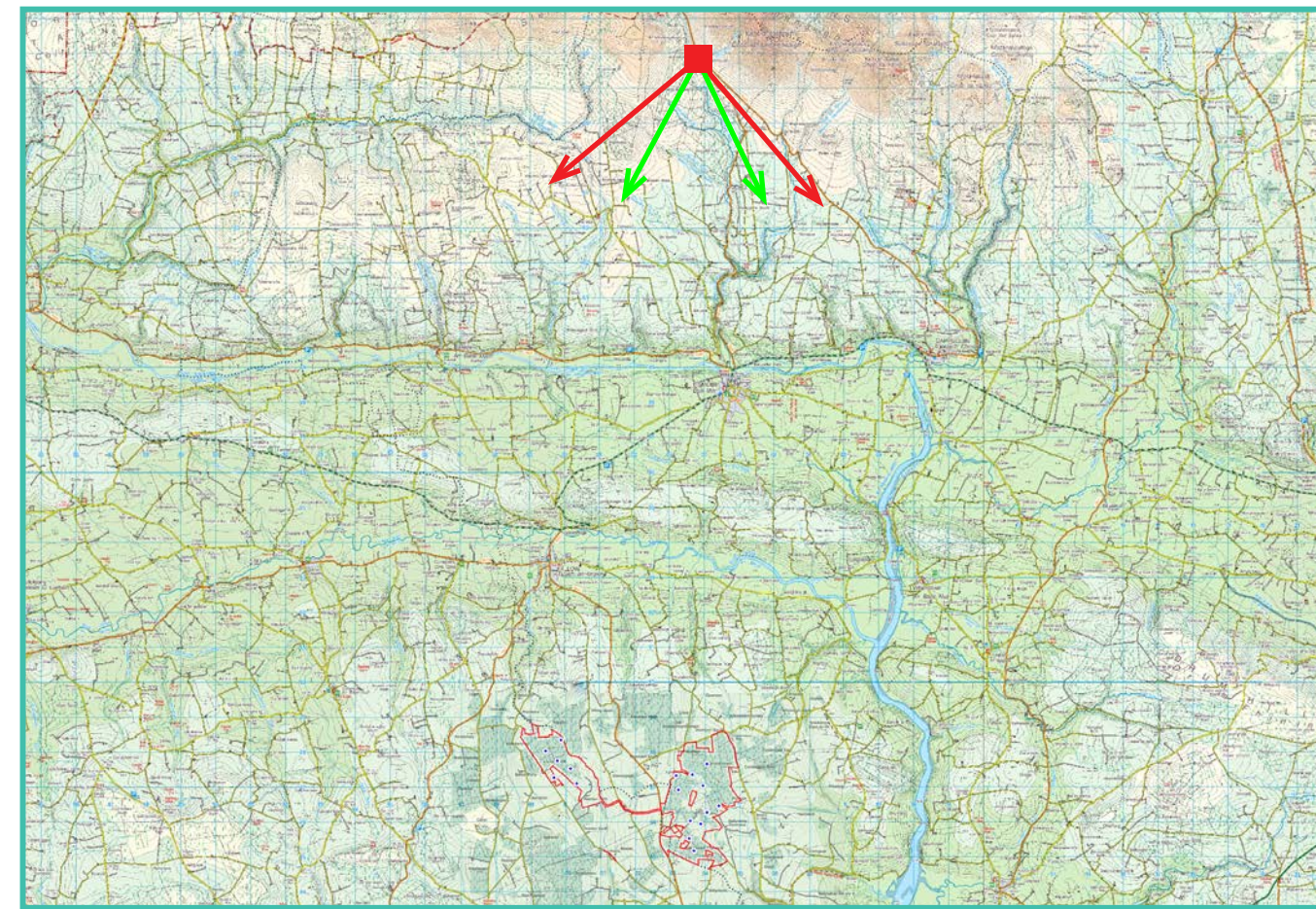
Photomontage 1

View Point: View from a viewing point on County Waterford Scenic Route No. 2 on the R668 regional road in the townland of Knockacomortish, approximately 19.85 km north of the of the nearest turbine.

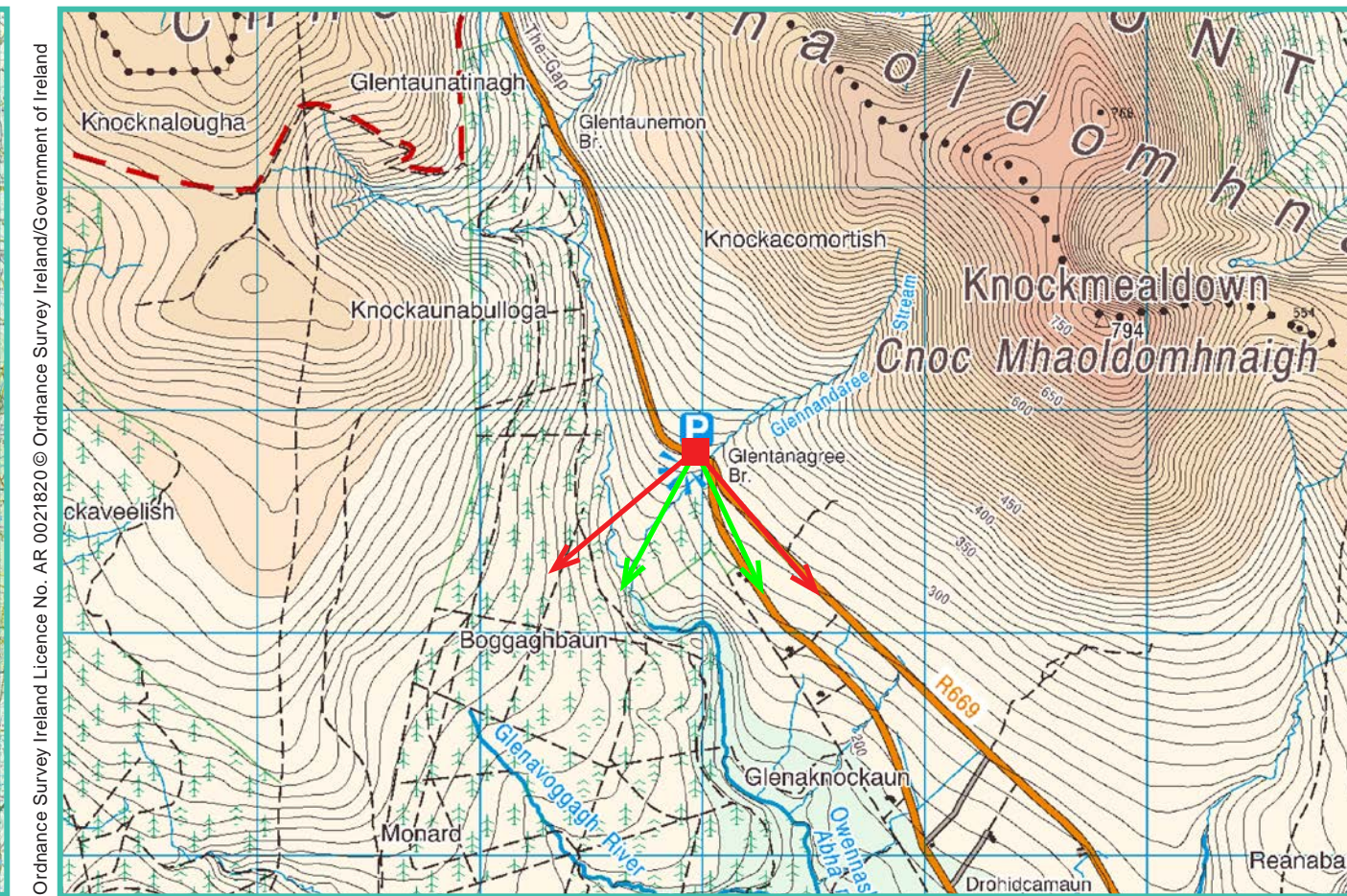
View point grid reference	203,975(E); 107,780(N)
Date of image taken	15.09.2019
Time of image taken	3:49pm
View point elevation	270m
Angle of Views	90° / 53.4°
View Direction (Image Centre)	185°
Horizontal extent of proposed turbines	15°
Distance to nearest proposed turbine	19.85km (T12)
Number of proposed turbines visible	17/17
Turbine Hub Height	93.5m
Turbine Tip Height	150m
Turbine Rotor Diameter	113m
Camera	Canon EOS 600D with 1.5x sensor
Lens	35mm prime. Equivalent zoom range 52.5mm
Tripod	Manfrotto 190X extended to approx 1.65m.
Map Licence	©Copyright of Ordnance Survey Ireland. All Rights Reserved; License No: AR 0021819



View point relative to 20km radius.



View point relative to wind farm site (core boundary outlined in red).



Detail of view point location.

Map Legend

- Area shown in 90-degree view
- Area shown in 53.5-degree view
- View point
- Site Boundary

Wireframe Legend

- Proposed Wind Farm in Blue
- Permitted Wind Farms in Pink
- Existing Wind Farms in Grey

Prepared by

MKO
Planning & Environmental Consultants
Tuam Road, Galway.

MKO Tel: (091) 73 56 11
E-mail: info@mkoireland.ie
Website: www.mkoireland.ie

90 - Degree View Extent

Key image at 120 degrees

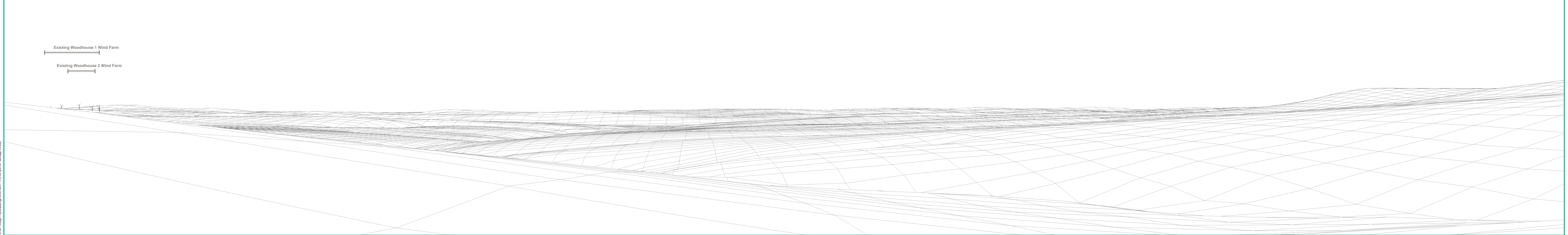


53.5-Degree View Extent

Baseline at 90 degrees

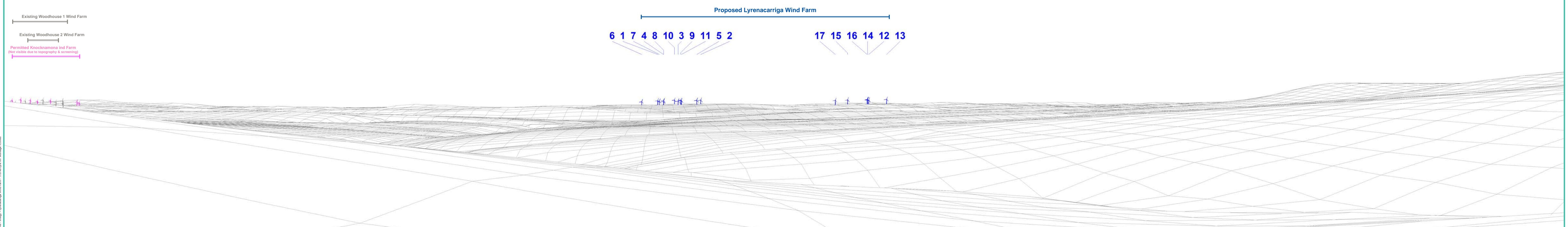


Matching wireframe





Matching wireframe



Proposed Photomontage at 53.5 degrees with Cumulative



Matching wireframe

Proposed Lyrenacarriga Wind Farm

6 1 7 4 8 10 3 11 9 5 2

18 16 13 17 15 12 14

