

13. BACKGROUND NOISE LEVELS: DATA PROCESSING

13.1 Location A (H08 Proxy)

13.1.1 All Raw Data – All Periods, No Filtering

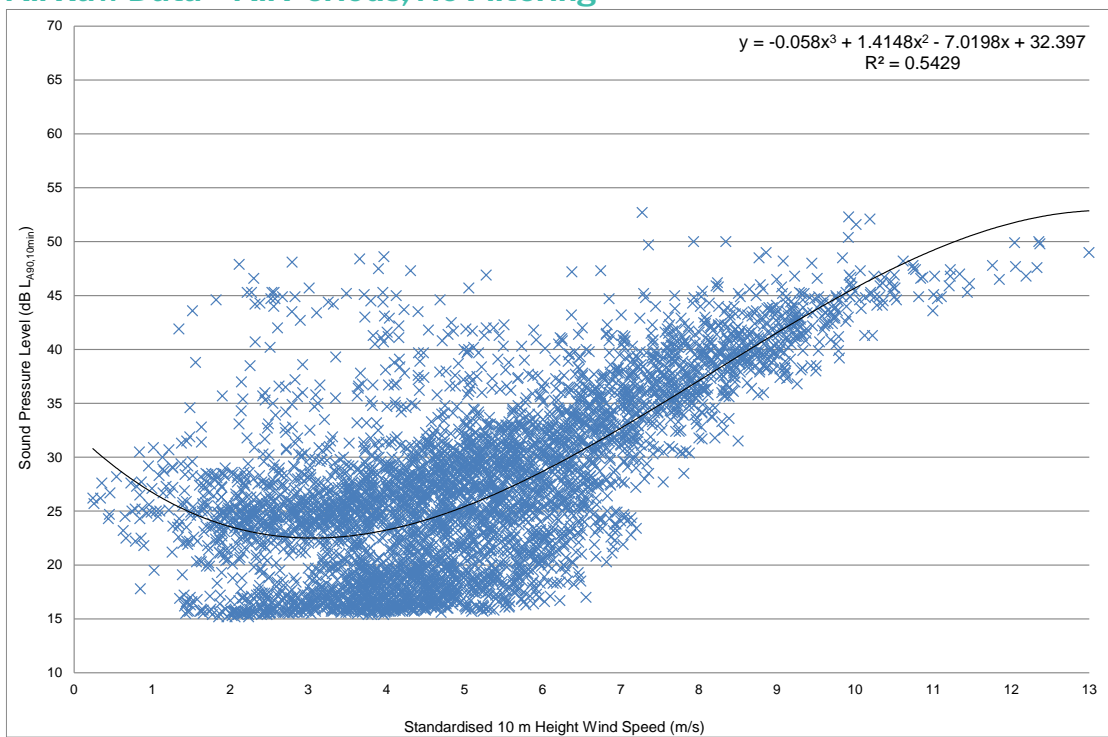


Figure 1 Location A (H08 Proxy) Background Noise Levels $L_{A90, 10 min}$ dB – All Periods, No Filtering

13.1.2 All Quiet Periods

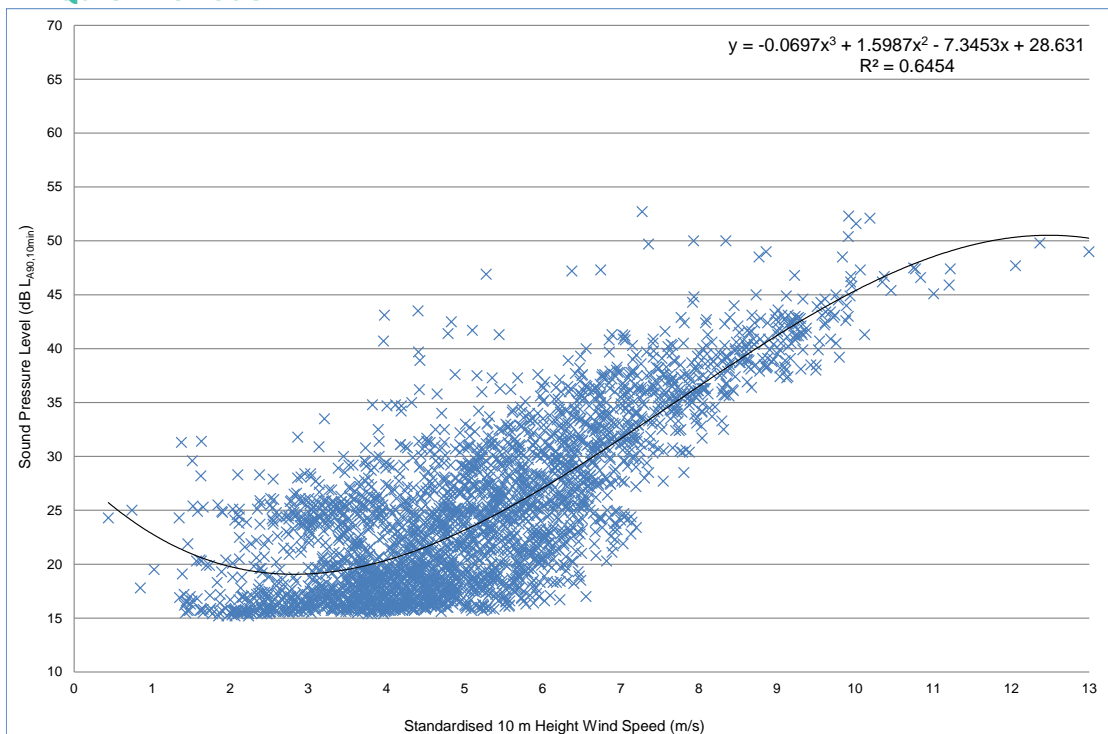


Figure 2 Location A (H08 Proxy) Background Noise Levels $L_{A90, 10 min}$ dB – All Quiet Periods

13.1.3 All Quiet Periods, No Rainfall

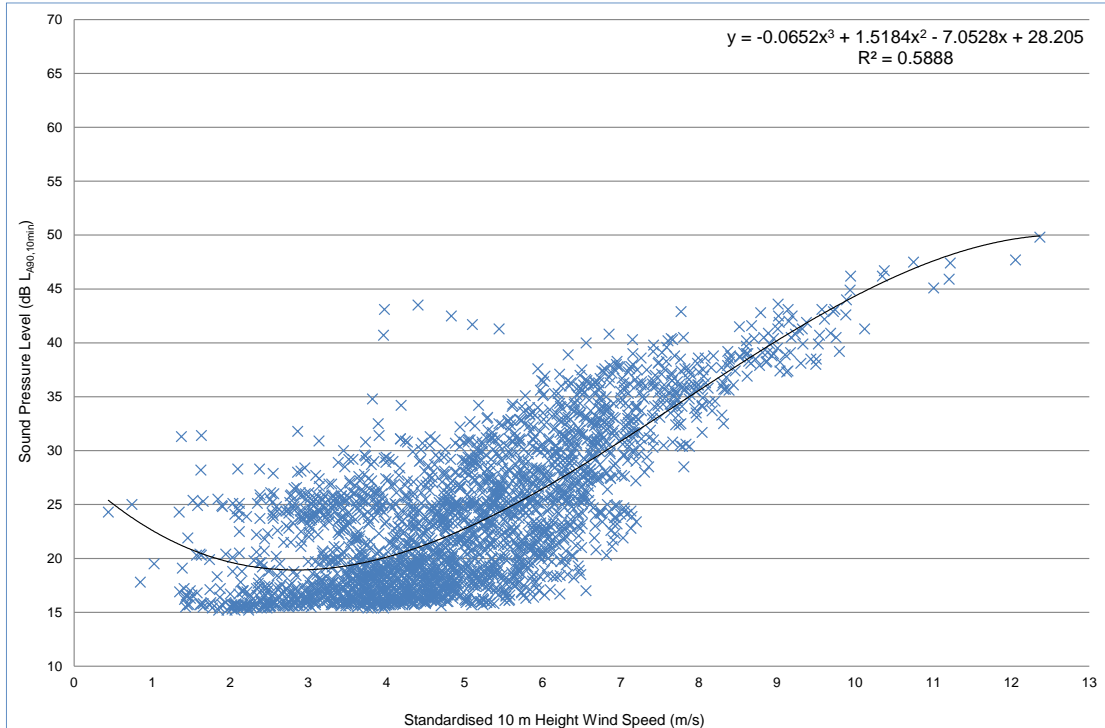


Figure 3 Location A (H08 Proxy) Background Noise Levels $L_{A90, 10 min}$ dB – All Quiet Periods, No Rainfall

13.2 Location C (H26Proxy)

13.2.1 All Raw Data – All Periods, No Filtering

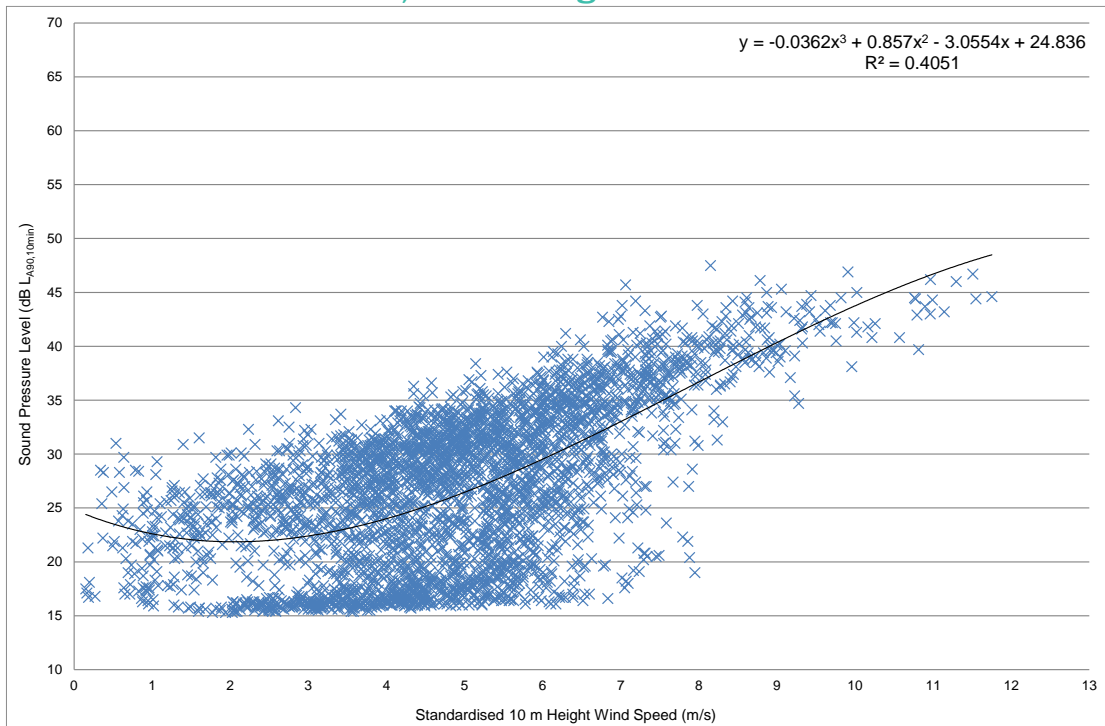


Figure 4 Location C (H26 Proxy) Background Noise Levels $L_{A90, 10 min}$ dB – All Periods, No Filtering

13.2.2 All Quiet Periods

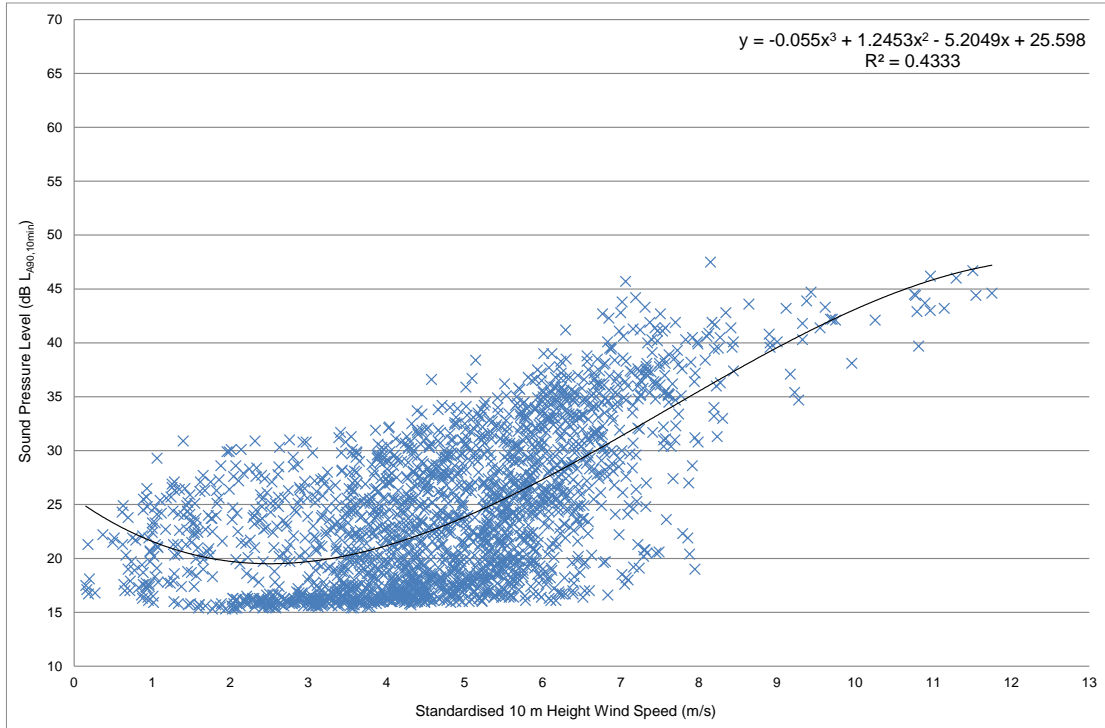


Figure 5 Location C (H26 Proxy) Background Noise Levels LA90,10 min dB – All Quiet Periods

13.2.3 All Quiet Periods, No Rainfall

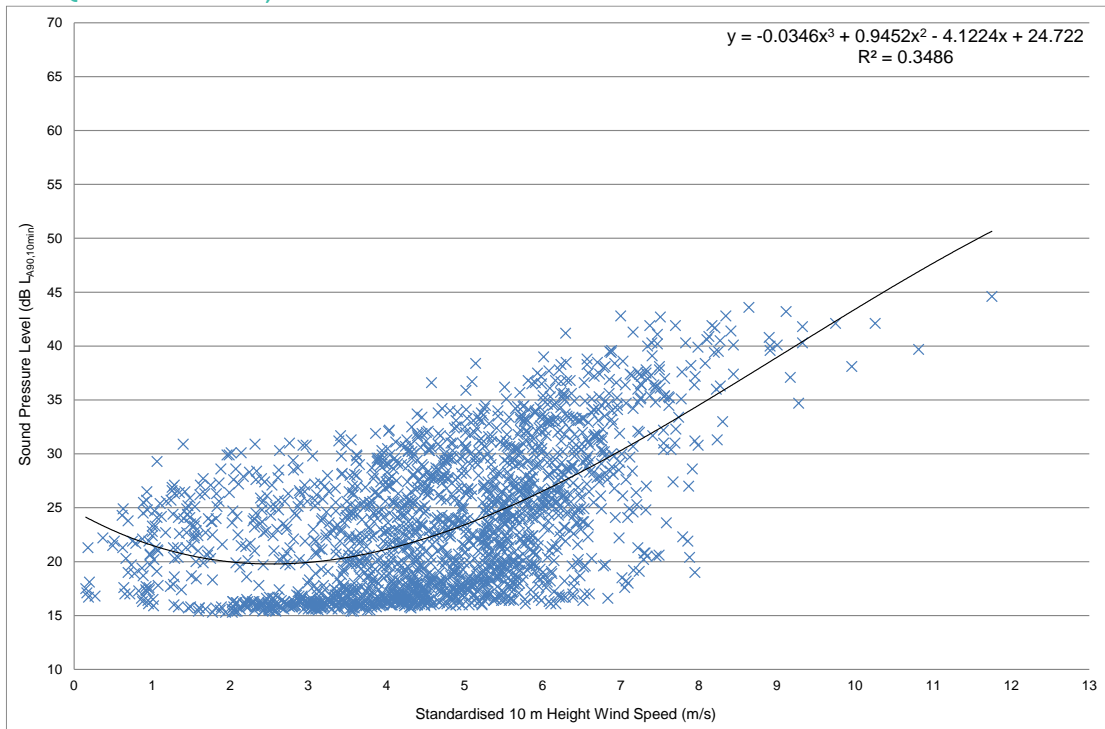


Figure 6 Location C (H26 Proxy) Background Noise Levels LA90,10 min dB – All Quiet Periods, No Rainfall

13.3 Location D (H51)

13.3.1 All Raw Data – All Periods, No Filtering

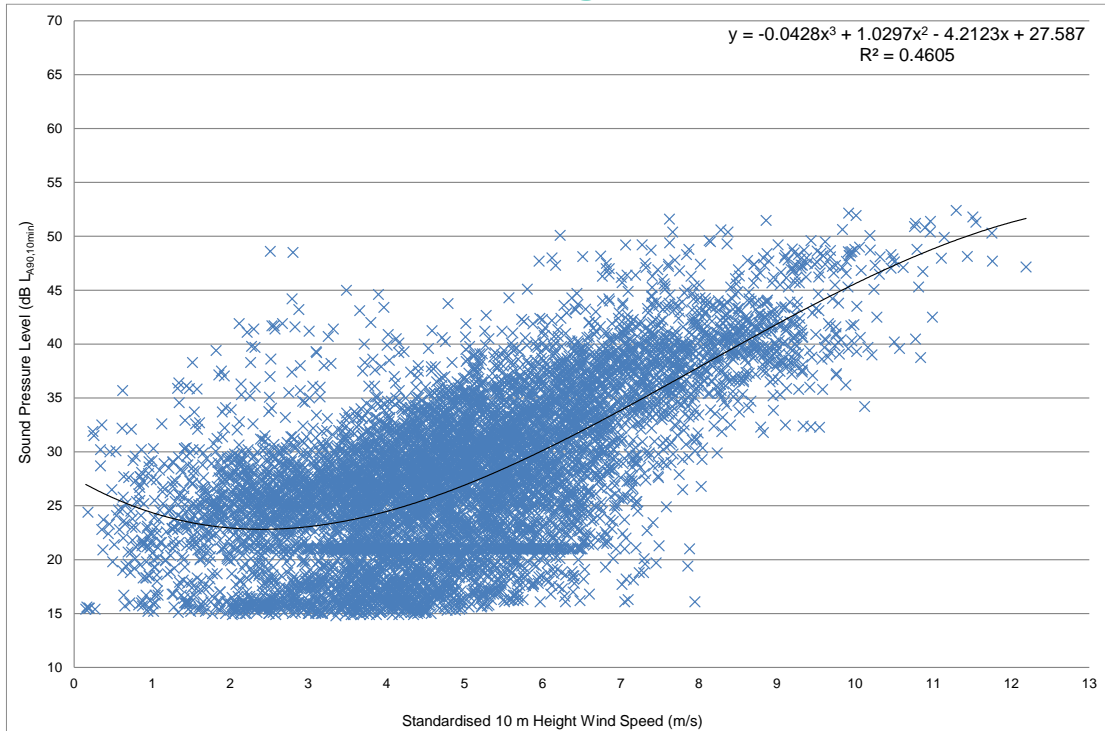


Figure 7 Location D (H51) Background Noise Levels $L_{A90,10min}$ dB – All Periods, No Filtering

13.3.2 All Quiet Periods

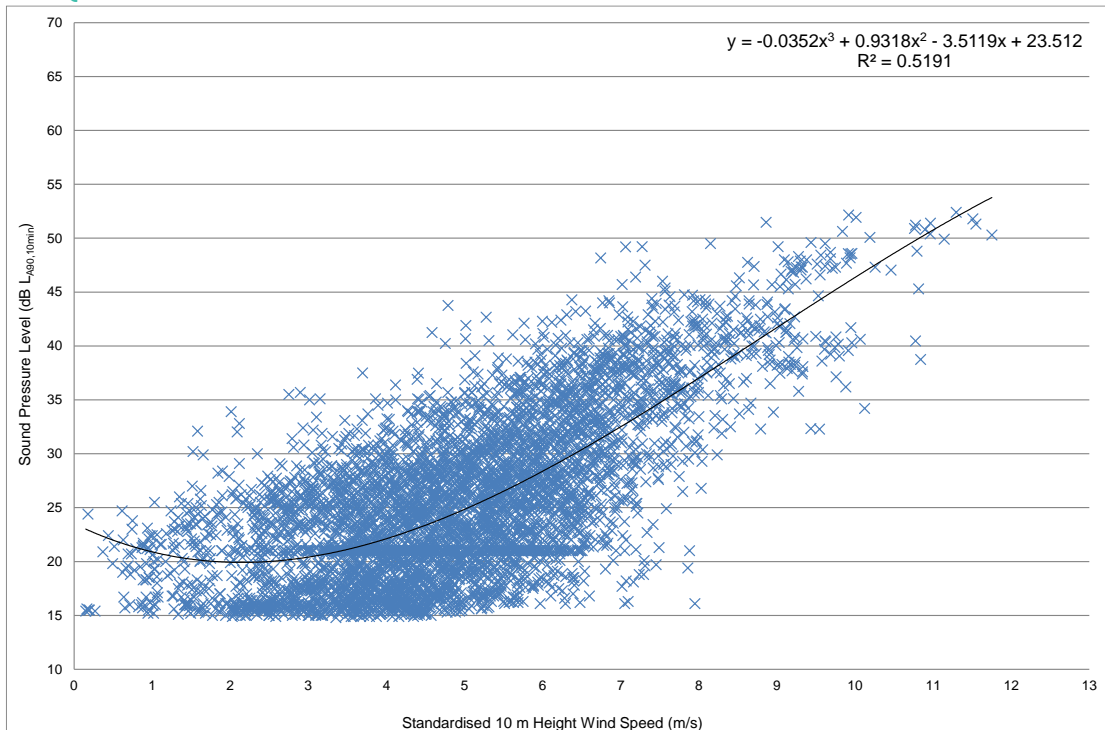


Figure 8 Location D (H51) Background Noise Levels $L_{A90,10min}$ dB – All Quiet Periods

13.3.3 All Quiet Periods, No Rainfall

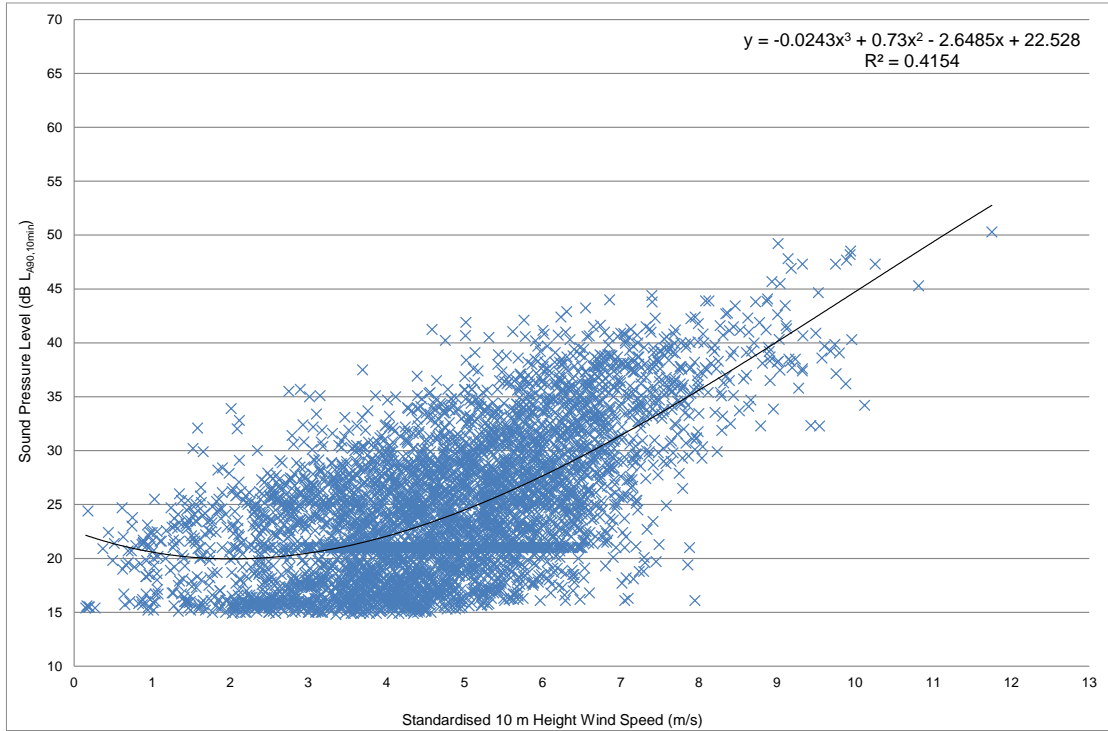


Figure 9 Location D (H51) Background Noise Levels $L_{A90,10min}$ dB – All Quiet Periods, No Rainfall

13.4 Location F (H45 Proxy)

13.4.1 All Raw Data – All Periods, No Filtering

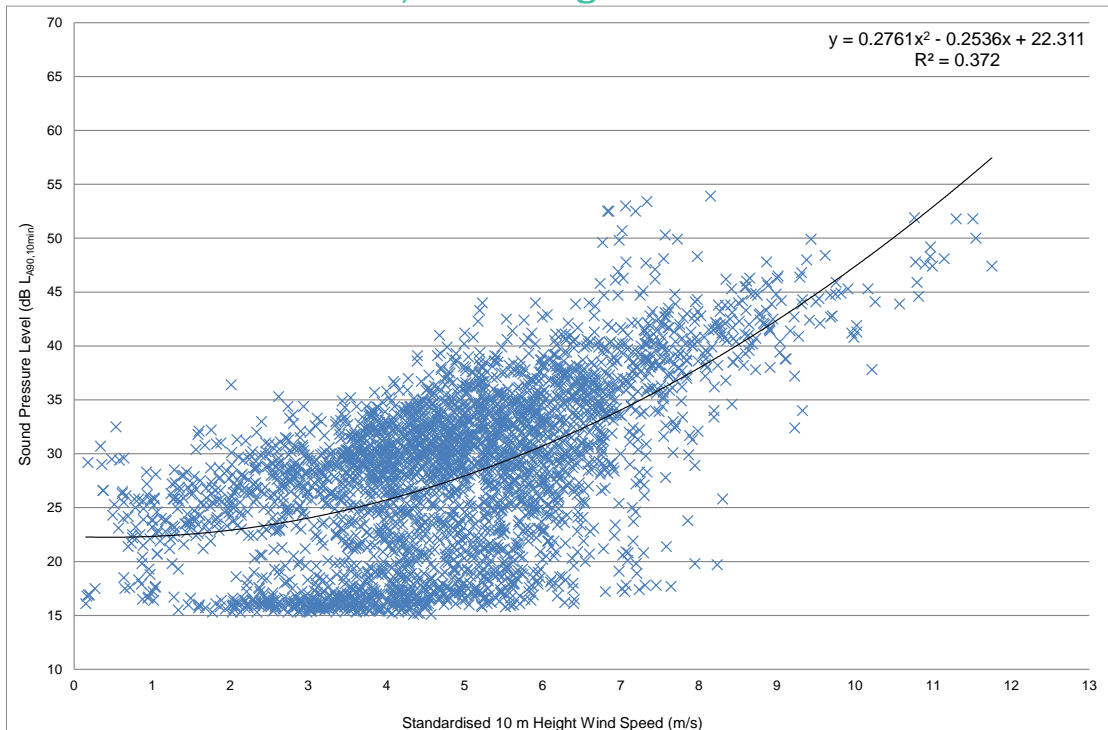


Figure 10 Location F (H45 Proxy) Background Noise Levels $L_{A90,10min}$ dB – All Periods, No Filtering

13.4.2 All Quiet Periods

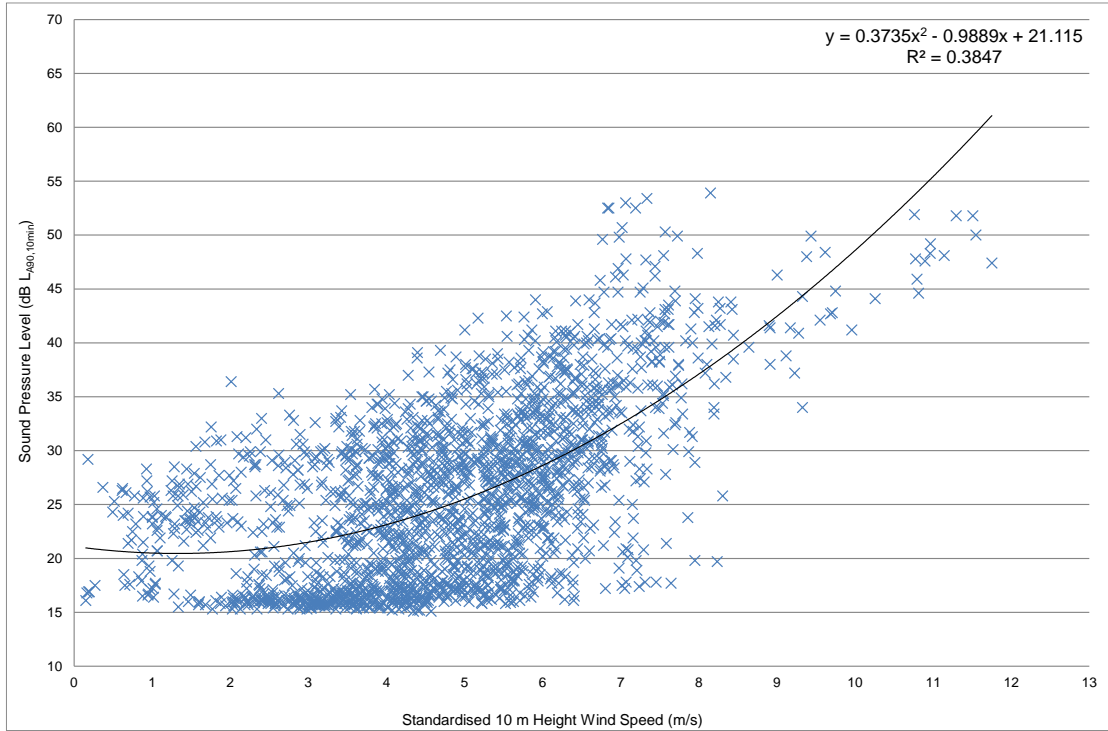


Figure 11 Location F (H45 Proxy) Background Noise Levels $L_{A90,10min}$ dB – All Quiet Periods

13.4.3 All Quiet Periods, No Rainfall

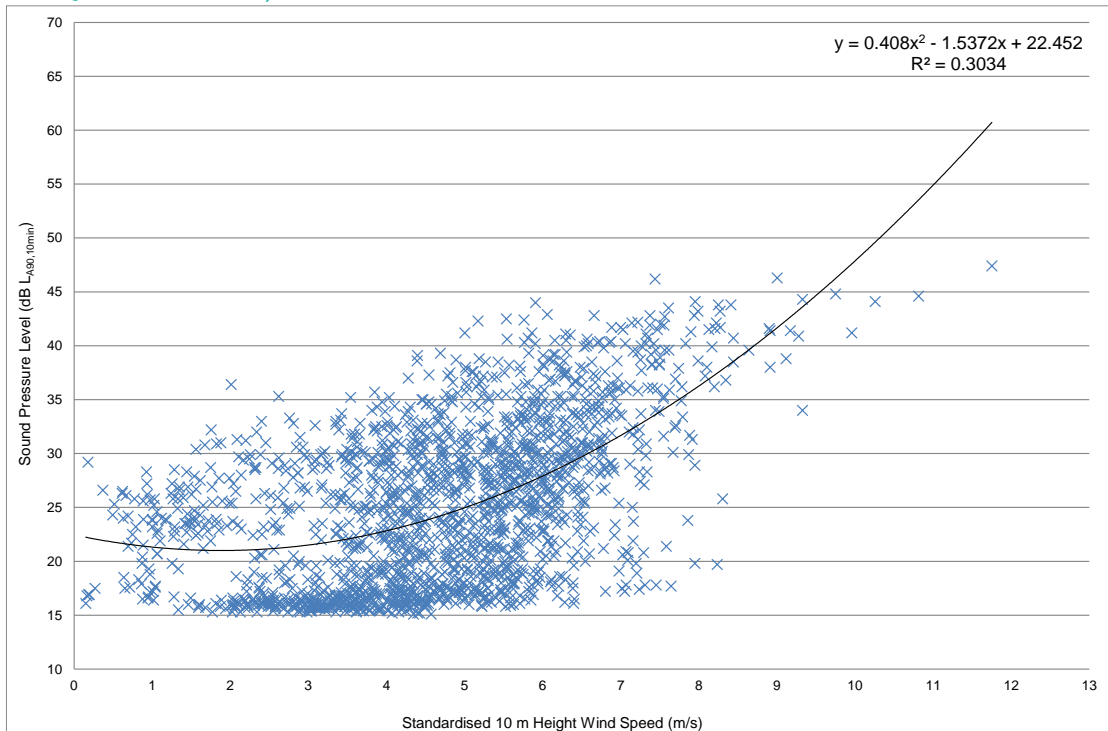


Figure 12 Location F (H45 Proxy) Background Noise Levels $L_{A90,10min}$ dB – All Quiet Periods, No Rainfall

13.5

Location G (H64)

13.5.1

All Raw Data – All Periods, No Filtering

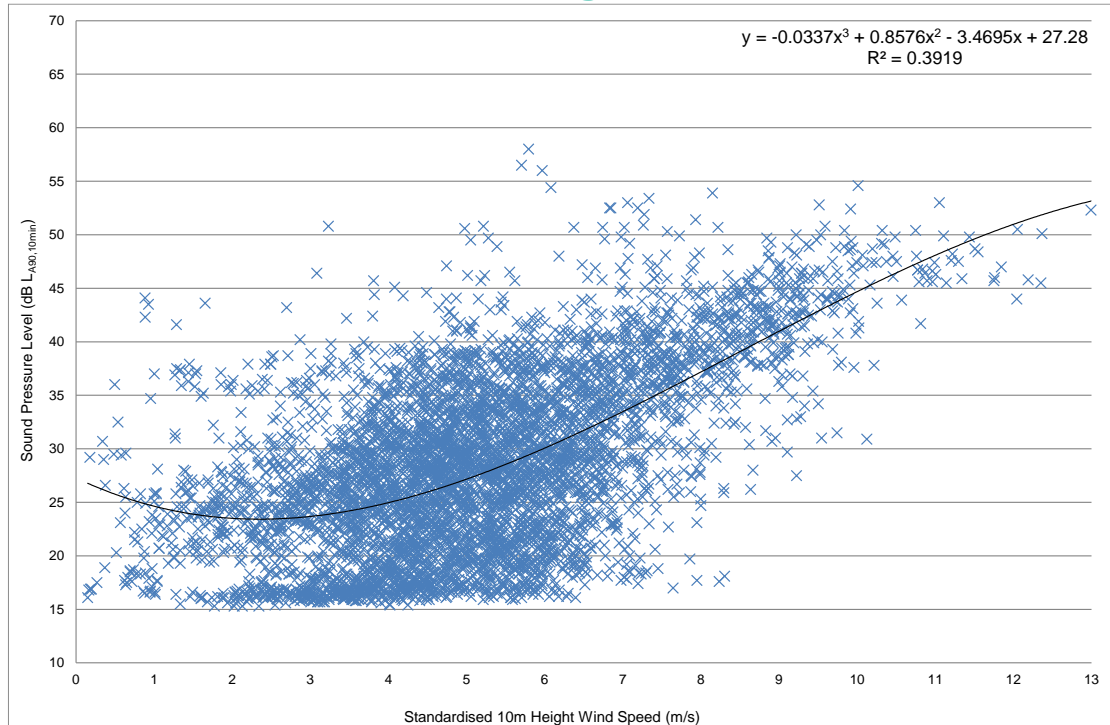


Figure 13 Location G (H64) Background Noise Levels $L_{A90, 10 min}$ dB – All Periods, No Filtering

13.5.2

All Quiet Periods

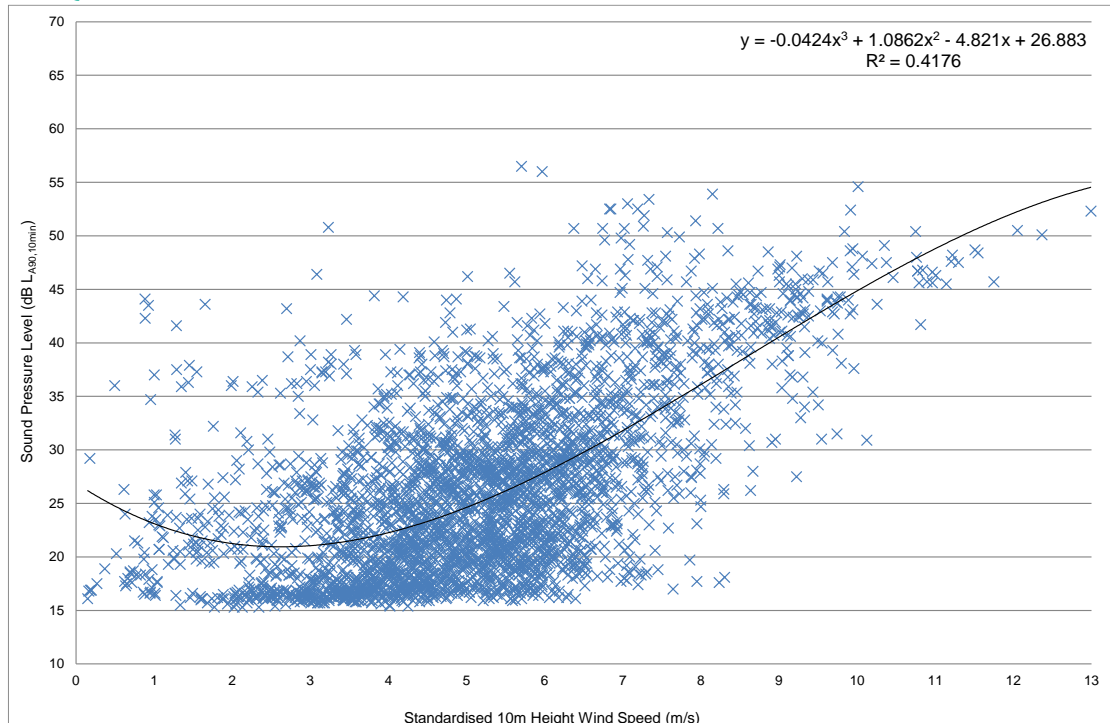


Figure 14 Location G (H64) Background Noise Levels $L_{A90, 10 min}$ dB – All Quiet Periods

13.5.3 All Quiet Periods, No Rainfall

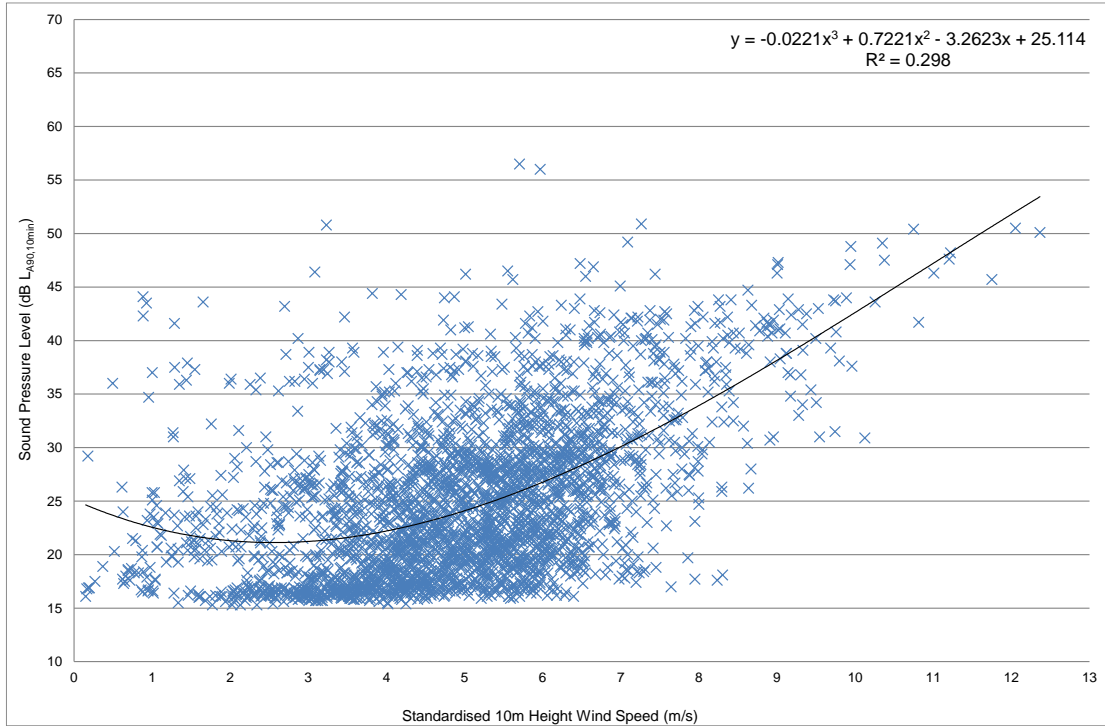


Figure 15 Location G (H64) Background Noise Levels $L_{A90,10min}$ dB – All Quiet Periods, No Rainfall

13.6 Location H (H67)

13.6.1 All Raw Data – All Periods, No Filtering

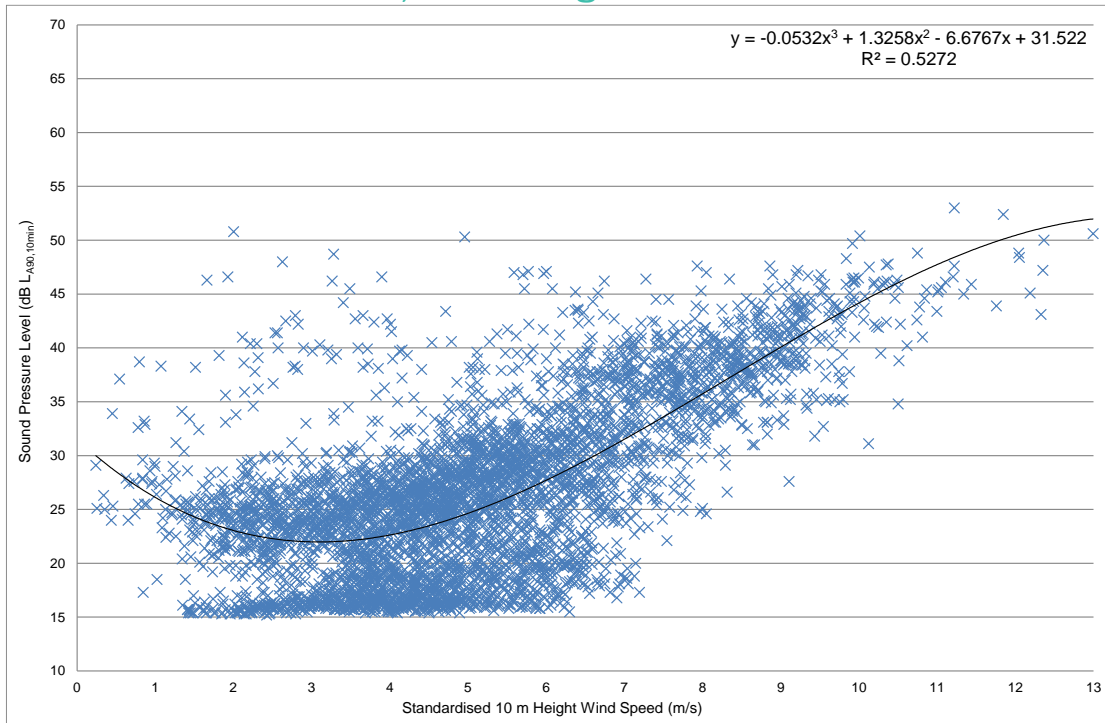


Figure 16 Location H (H67) Background Noise Levels $L_{A90,10min}$ dB – All Periods, No Filtering

13.6.2 All Quiet Periods

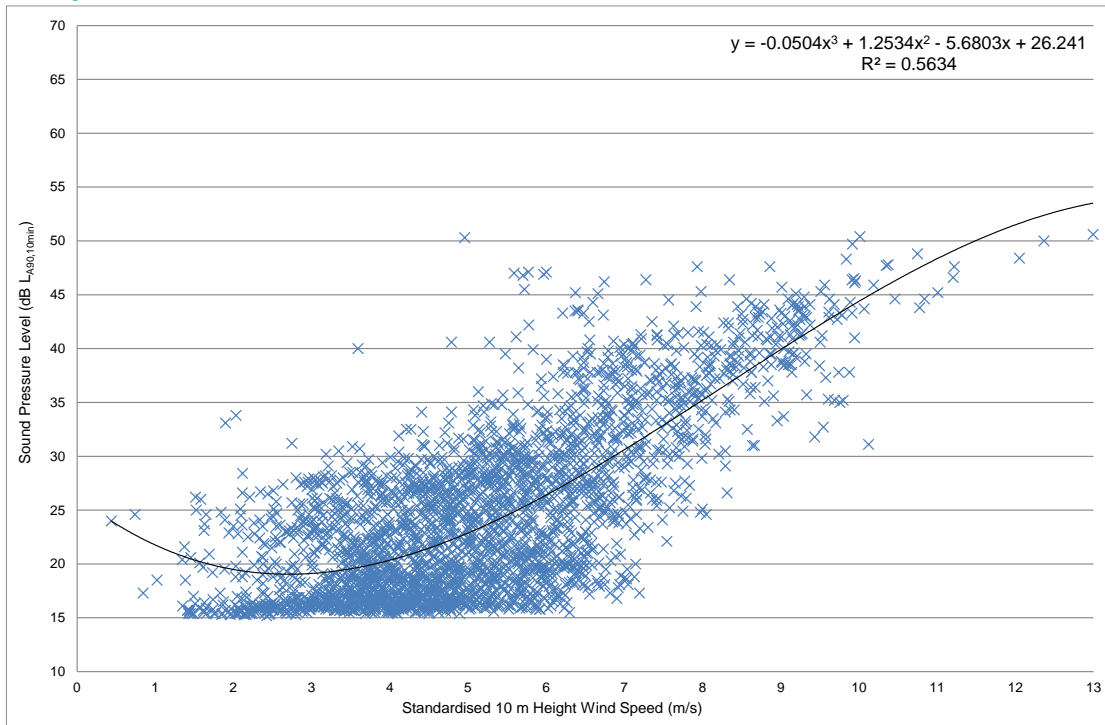


Figure 17 Location H (H67) Background Noise Levels $L_{A90,10min}$ dB – All Quiet Periods

13.6.3 All Quiet Periods, No Rainfall

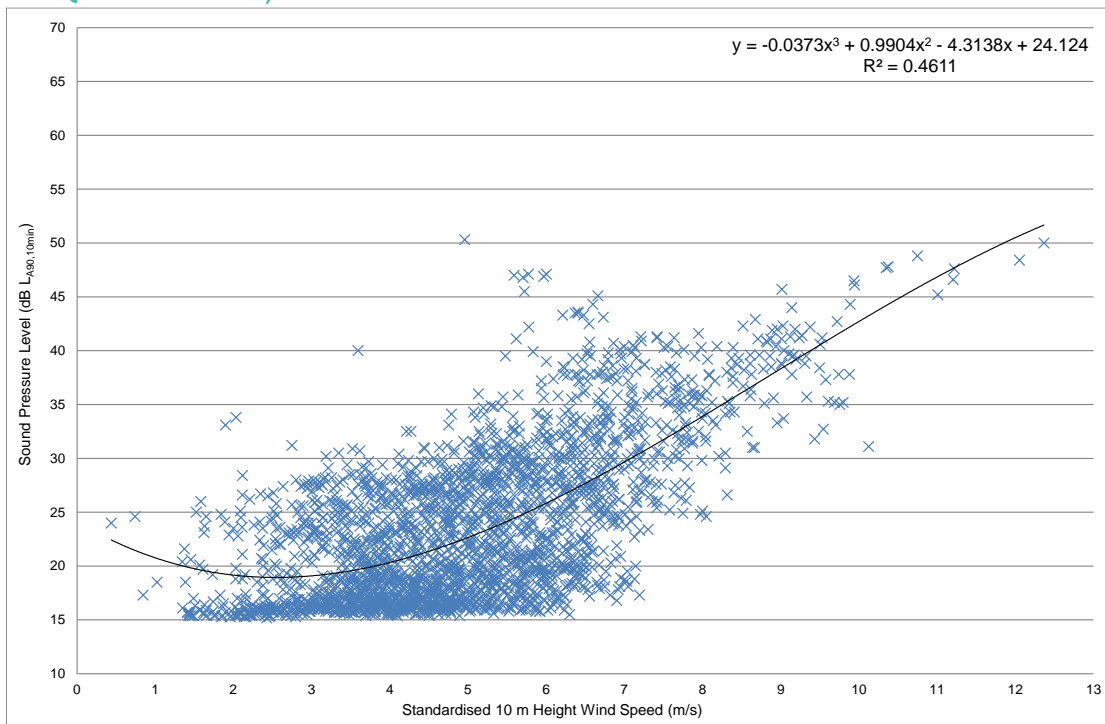


Figure 18 Location H (H67) Background Noise Levels $L_{A90,10min}$ dB – All Quiet Periods, No Rainfall