

PROJECT

**Innogy Lyre Wind Farm
 OHL Front End
 Engineering**

CLIENT

INNOGY



CONSULTANTS



NOTES: -

1. Layout and Arrangements of Substation Building and Electrical Equipment is shown indicatively and for illustration purposes only.
2. Dimensions shown are as per current Eirgrid Specifications at the time of submission. Dimensions may vary at time of construction to reflect any revisions to Eirgrid Specifications.
3. Final Specifications of Buildings and Electrical Equipment is to be as per Eirgrid and ESB Specifications.
4. The Elevation of the Compound will be depicted by localized Topography such that Cut/Fill Earthworks associated with the construction of the Compound are balanced.

LEGEND: -

	Description
G	Gantry.
SA	Surge Arrester.
DL/DE	Line / Earth Disconnect.
DT/DEMI	Trafo / Earth Disconnect.
VT	Voltage Transformer.
CT	Current Transformer.
CB	Circuit Breaker.
DA	Busbar Disconnect.
PI	Post Insulator.
LM	Lighting Mast.

ISSUE/REVISION

NO.	DATE	DESCRIPTION
P00	15.12.20	Issued for Planning
I/R	DATE	DESCRIPTION

Drawn By : Ger Donnellan

Approved : Ruairi Geary

PROJECT NUMBER

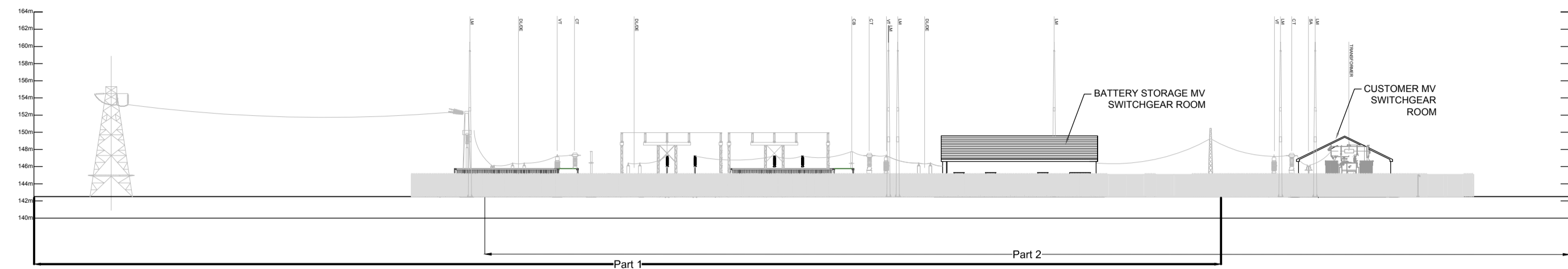
05-664

SHEET TITLE

Loop in Substation -
 Southwest Elevations

SHEET NUMBER

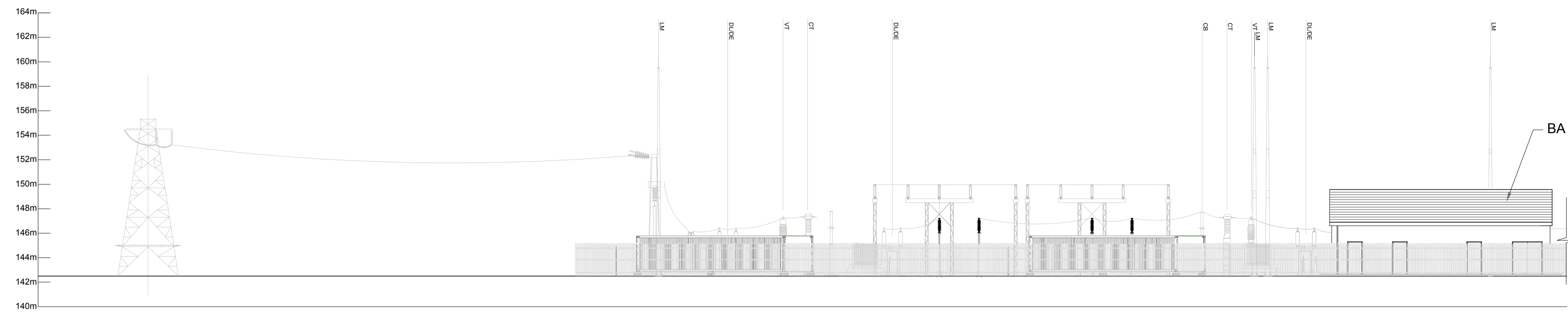
170749 - 25 _ (05664-DR-220)



North East Elevation

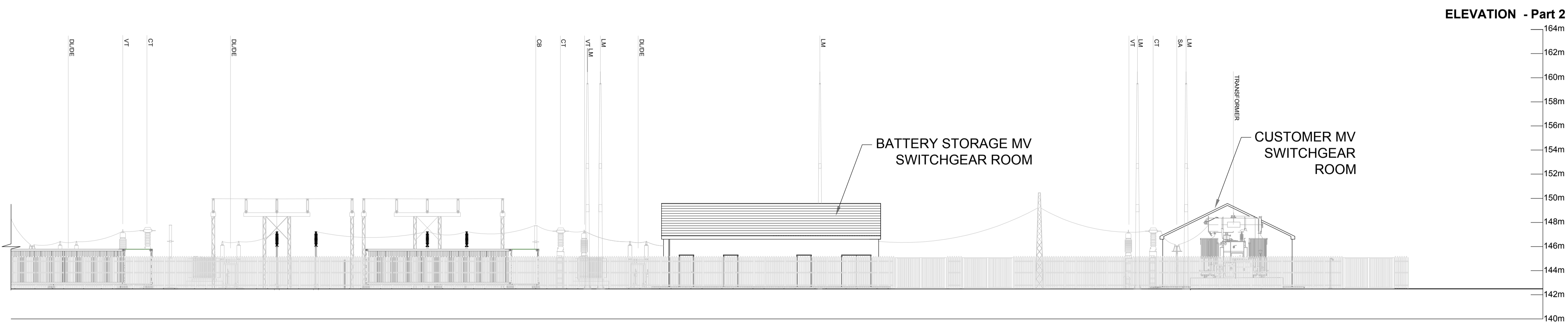
SCALE 1:500

ELEVATION - Part 1



Southwest Elevation

SCALE 1:200



Southwest Elevation

SCALE 1:200